

**miniKUT™**  
MINIMALLY INVASIVE FILE SYSTEM

**Designed by Endodontists  
for Endodontists**



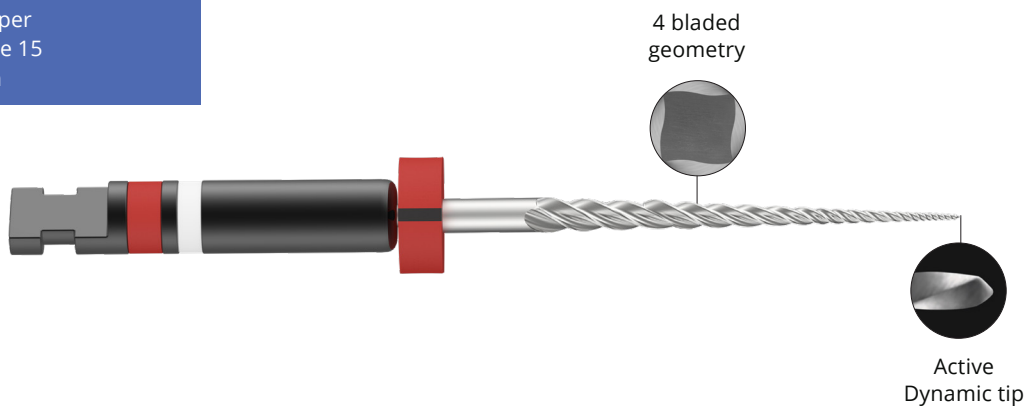
"As we think about preserving natural dentin to help ensure a lifelong restoration, the name miniKUT seemed so appropriate. The goal is to empower the clinician in search of MIE outcomes. I hope you find the miniKUT Rotary NiTi System as beneficial to your patients as I do..."

– Dr. L. Stephen Buchanan



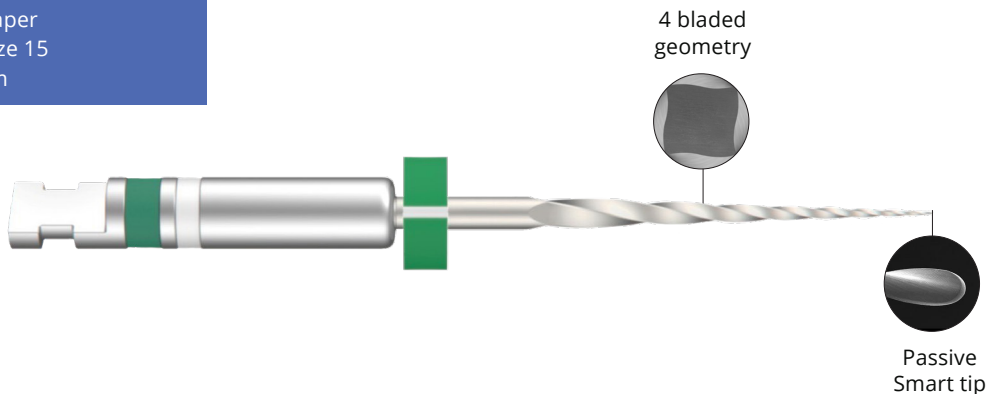
## miniKUT MB2 File – “The BlackJack™”

.05 Taper  
Tip size 15  
17mm



## miniKUT Orifice Shaping File

.07 Taper  
Tip size 15  
17mm



### Taper Legend

Taper indicated on  
Stop and Top Color  
Band

.03 – Yellow  
.05 – Red  
.06 – Blue

.07 – Green  
.08 – Black

# miniKUT EZP™ Negotiating Files

.03 Taper and .05 Taper

Tip size 15

21, 25, and 31mm

Taper

Tip

Calibration Marks

Maximum flute diameter

.03 Taper – 0.80mm

.05 Taper – 1.0mm

4 Bladed geometry

Passive Smart tip

4 Bladed geometry

Active Dynamic tip

# miniKUT Shaping Files

.03 Taper and .05 Taper

Tip sizes 20–45

21, 25, and 31mm

2 Bladed geometry

Passive Smart tip

2 Bladed geometry

Passive Smart tip

# miniKUT Retreatment File

.06 Taper and .08 Taper

Tip sizes 20 (.06), 25 (.08)

21 and 25mm

3 Bladed geometry

Passive Smart tip

3 Bladed geometry

Passive Smart tip

Calibration Legend

21mm: 18,19, 20mm

25mm: 18, 19, 20, 22, 24mm

31mm: 24, 25, 26, 28, 30mm

Maximum Flute Diameter

.03 Taper: 0.80mm

.07 Taper: 1.0mm

.05 Taper: 1.0mm

.08 Taper: 1.0mm

.06 Taper: 1.0mm

2

## miniKUT Procedure Packs

3 Files	
Small Canals	15/.07, 15/.03, 25/.03 (17mm & 25mm)
Large Canals	15/.07, 25/.05, 35/.05 (17mm & 25mm)



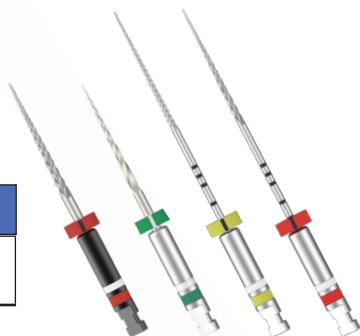
## miniKUT MB2 Files (The BlackJack)

6 Pack
15/.05 17mm



## miniKUT Rotary Negotiation Sampler Pack (Best Sellers)

4 Files
15/.05 (mb2), 15/.07, 15/.03, 15/.05 (17mm & 25mm)



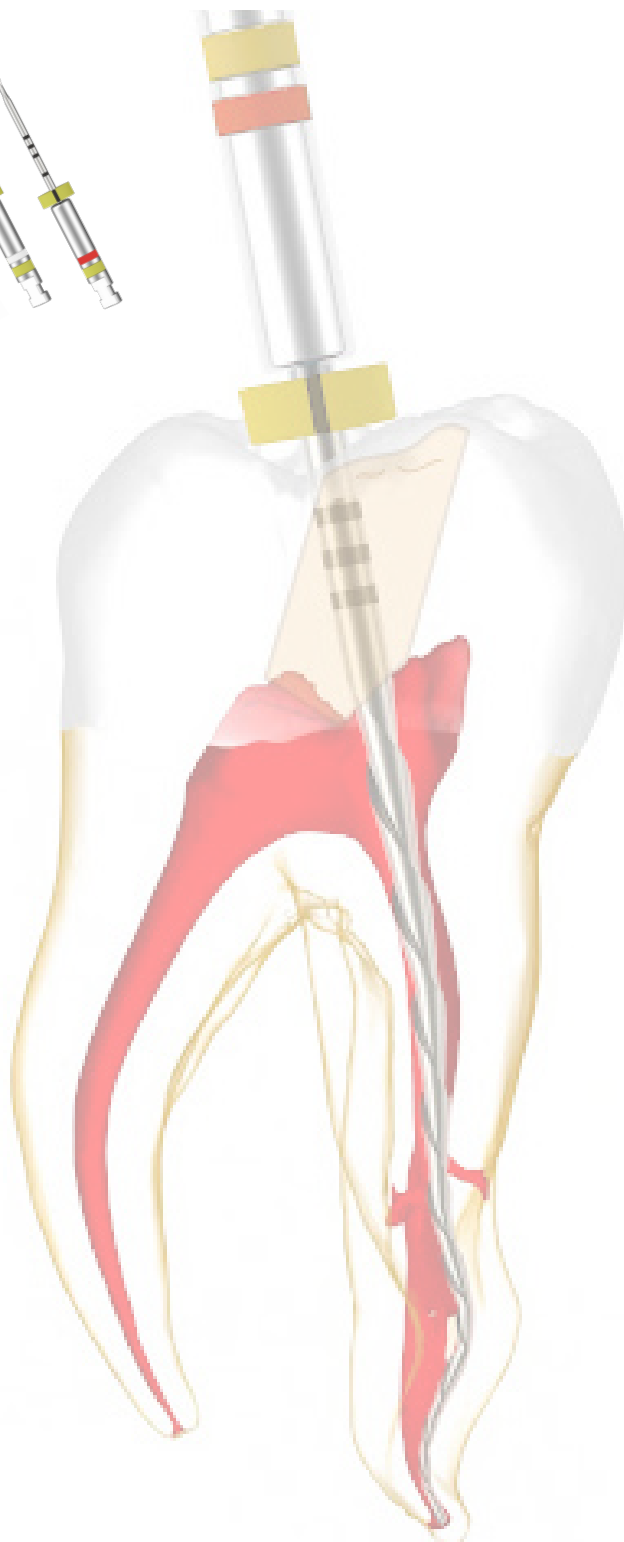
## miniKUT Orifice Shaping Files

6 Pack
15/.07 17mm



## miniKUT EZP Negotiating Files

6 Pack
15/.03, 15/.05 (21mm, 25mm, & 31mm)



## miniKUT Shaping Files

6 Pack
Sizes 20-45 Tapers .03 & .05 21mm, 25mm, & 31mm



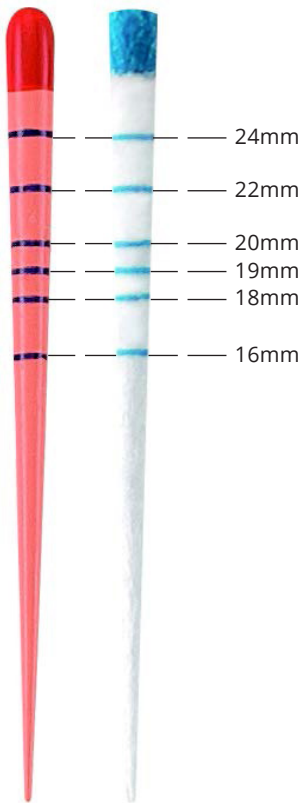
## miniKUT Retreatment Files

3 Pack
Sizes 20/.06 (21mm & 25mm) 25/.08 (21mm & 25mm)



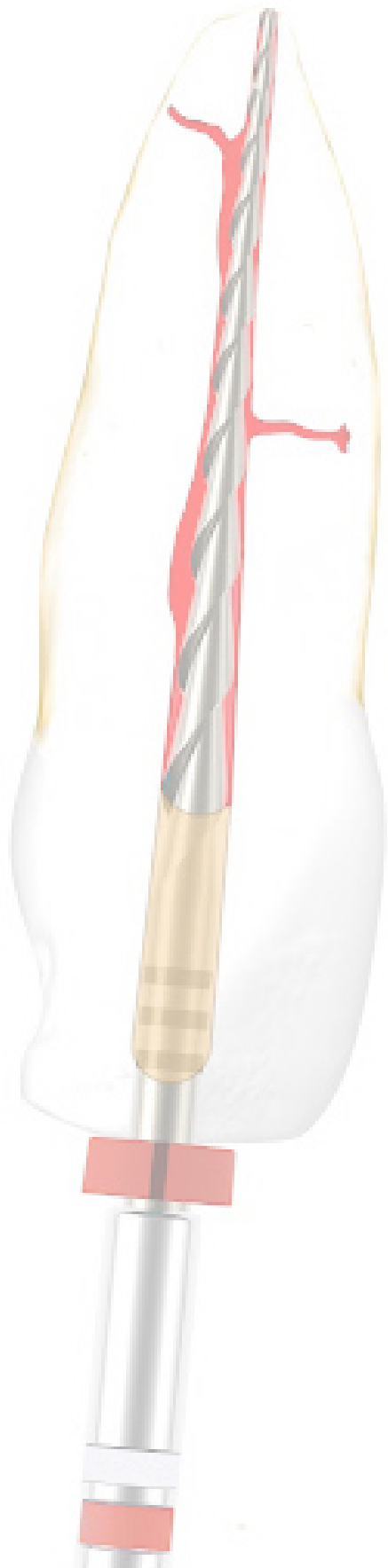
## miniKUT Gutta Percha Points

60 Points per Pack
Sizes: 15-45 Tapers: .03 & .05 Assorted Packs: 15-40 (.03 & .05 Taper)



## miniKUT Paper Points

100 Points per Pack
Sizes: 15-45 Tapers: .03 & .05 Assorted Packs: 15-40 (.03 & .05 Taper)

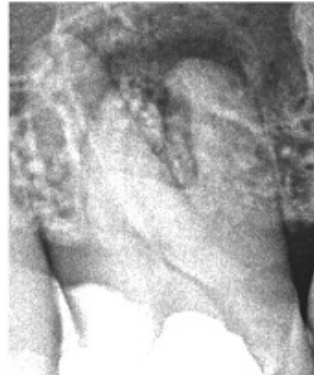


# Clinical Truths

## miniKUT EZP



This case by Christophe Verbanck illustrates how the combination of flexibility and core strength of miniKUT EZP 15/.03 benefits deep multi-dimensional curves.



*"The miniKUT feature I appreciate most is the fully radiused "Duckbill" tip. It not only negates any potential for ledging but also eliminates the use of hand files."*

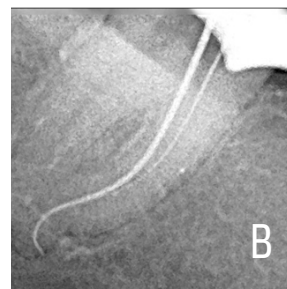
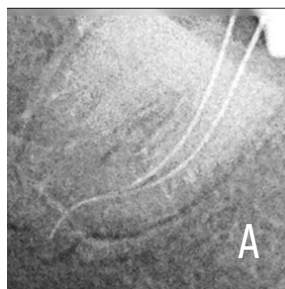
– **Dr. Christophe Verbanck**  
Endodontist



## miniKUT EZP



This case by Marc Kaloustian demonstrates using the miniKUT EZP 15/.03 as "First File to Length". Image A features no patency with a 10K File. Image B shows patency achieved with a miniKUT 15/.03 run at 800rpm.



*"I like the great ability of miniKUT files to shape quickly, safely, in a conservative way, narrow long canals with the perfect respect of the original anatomy."*

– **Dr. Marc Kaloustian**  
Endodontist



## miniKUT EZP



This case by Bobby Nadeau was finished to a miniKUT 15/.03 in all canals highlighting the potential for deep minimal shaping in curved canals.

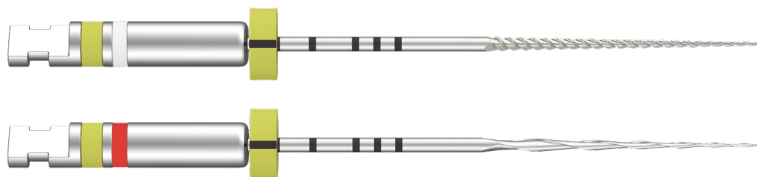


*"The MiniKUT file is extremely flexible, efficient, and safe, even in the most challenging canals. The matching gutta percha points also fit the preparation perfectly."*

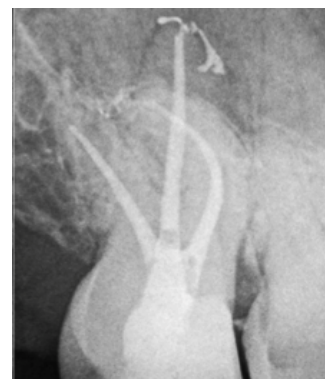
– **Dr. Bobby Nadeau**  
Endodontist



## miniKUT Small Canals Procedure Pack



This case by Rafael Marte Fiallo demonstrates how the miniKUT Small Canals Procedure Pack provides an ideal 3 file set-up. Shape the orifice with the OS file at 1000 rpm, and get to length with EZP 15/.03. Finish with the miniKUT 25/.03.



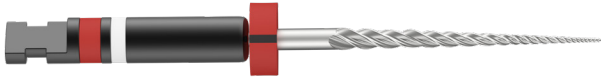
*"I'm very impressed with the way miniKUT files behave in my hands. They are fast, secure, and well balanced. it is a game changing file system."*

– **Dr. Rafael Marte Fiallo**  
Endodontist

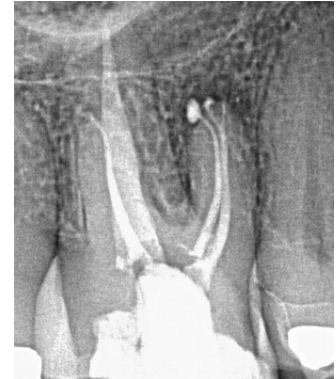




## miniKUT MB2 - “The BlackJack™”



This case by Roger Warren demonstrates how the 17mm BlackJack™ with its Dynamic tip is the ideal instrument to capture the orifice and coronal shaping of a calcified MB2.



*“The BlackJack™ has become my go-to for accessing MB2s. The subtly angled Dynamic Tip provides just enough cutting to find these often calcified canals.”*

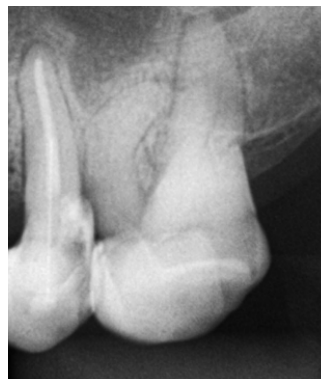
– **Dr. Roger Warren**  
Endodontist



## miniKUT MB2 - “The BlackJack™”



This case by Milena Perraro Martins features the miniKUT MB2 15/.05 used in all canals demonstrating the minimal coronal shaping.



*“miniKUT files are safe to use in canals with extreme curvature, and the miniKUT MB2 file can be used in all canals as an orifice shaper.”*

– **Dra Milena Perraro Martins**  
Endodontist





## miniKUT Shaping Files



This case by JT Crepps highlights how the precise cutting of the miniKUT 20/.03 helps preserve the natural anatomy of even delicate canals.



*"miniKUT has some of the most conservative rotary files on the market, which makes it easier to conserve tooth structure. Their gutta percha fits very well, which is not the case for other conservative files on the market."*

– Dr. JT Crepps  
Endodontist



## miniKUT Retreatment Files



This case by Brett Gilbert featured the miniKUT .06 Retreatment file with its 3-bladed cross section which provides the right balance of strength and room for GP removal running at 1,000 rpm. Notice how the canal shape was minimally maintained.



*"I perform non-surgical retreatment cases in my practice everyday. For years I have been looking for a minimally invasive file that was strong and flexible enough to engage and remove gutta percha without overshaping the canals. I am grateful to have found the MiniKUT Retreatment File for this purpose. These files help me get the job done efficiently and conservatively."*

– Dr. Brett Gilbert  
Endodontist



## A MULTI-CANNULAR NEGATIVE PRESSURE IRRIGATION DEVICE



**PS SYSTEM**  
A MULTI-CANALULAR NEGATIVE PRESSURE IRRIGATION DEVICE

## PulsSucker®

**MOLAR**  
TREATMENT KIT



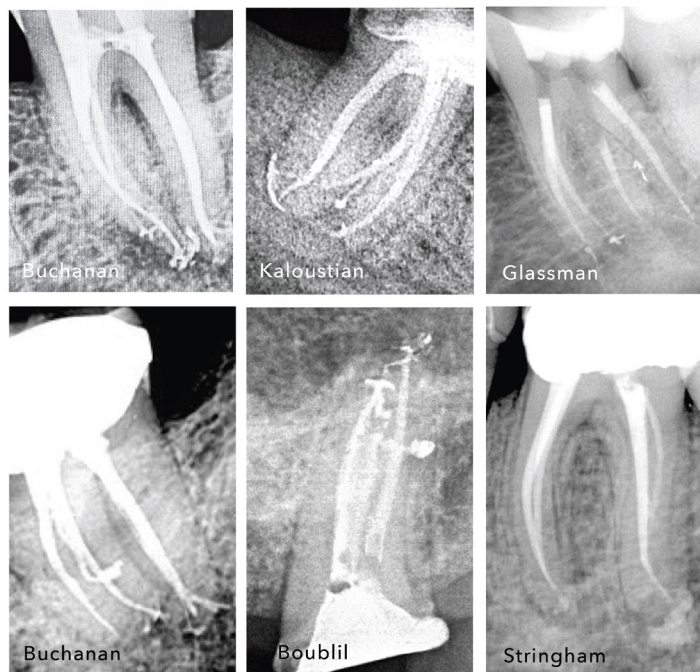
**MOLAR KIT COMPONENTS:**

- SuckerCIP® (E0318) plus CIPK0  
Springs with irrigating tip
- Sucking Assembly
- Sucking placement tool
- Vacuum kit that fits in salvin or HVE valve
- VacuSeal® light-cure material with delivery tip
- Color-XTM® Plus  
(enhanced 5.0% NaCl)  
Empty syringe for aspiration
- Molar cannula set with tubing
- Adaptor cannula

► PlanB Dental



A clinical photograph showing the PulsSucker Molar Treatment Kit being used on a patient's teeth. The device is connected to a vacuum source and a syringe, and is shown aspirating debris from the molar preparation.

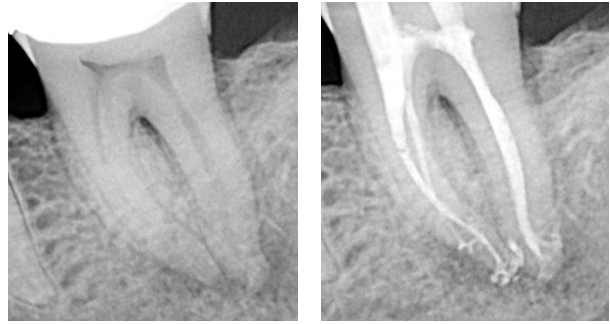


The image displays a variety of dental equipment used for pulp treatment. At the top center is the 'PulpSucker' kit box, which is white and blue. It features the text 'PS SYSTEM' and 'PulpSucker®' along with a diagram of a tooth and a green arrow indicating the direction of pulp removal. To the left of the box is a 'PulpSucker Plus' bag, which is white and contains a clear tube. Below the box is a syringe with a green plunger and a black needle. To the right of the syringe is a long, clear tube with a blue connector. Below the tube is a small orange cap. To the left of the cap is a metal rod. To the right of the cap is a coiled tube with a blue connector. The equipment is arranged on a white background.

[illegible]

9

This vital case had 3 primary canals and a multiplicity of lateral canals. The distal root harbors an apical delta system. This was an MIE case with 2 separate ninja access openings. PulpSucker is the only multi-cannular closed system that could operate through these tiny openings.

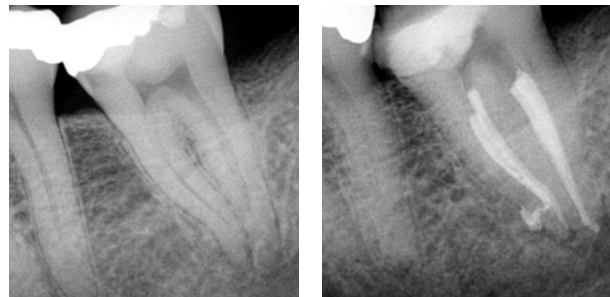


*"My decades long journey in understanding the art and science of Endodontics has led me to the development of The PulpSucker. I hope you find it as useful as I have."*

**– Dr. L. Stephen Buchanan**  
Endodontist



Non-vital pulp with symptomatic apical periodontitis. Note the lateral canal in the apical 1/3rd of the mesial root!

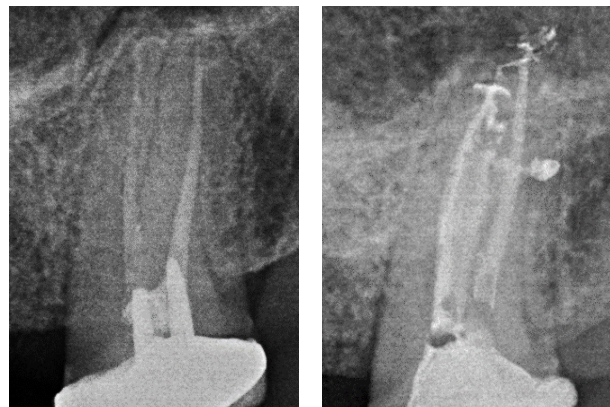


*"As I learn more through my clinical experience, I think The PulpSucker has the potential to be a relevant option for robust RCT cleaning."*

**– Dr. Gary Glassman**  
Endodontist



A endodontically-treated and restored tooth, with double post and terrible root filling. That's 90% of my cases! C shape, and I only retreated the two canals, and left the isthmus being pulp sucked and voila! Continuous wave obturation of course.

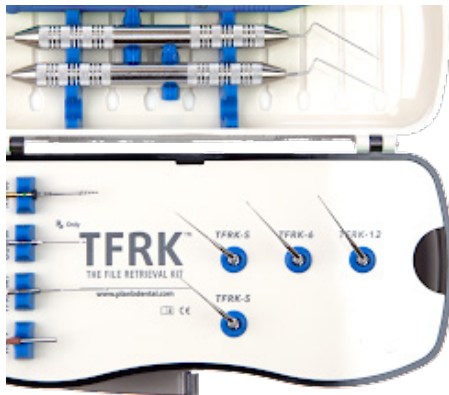


*"I have enjoyed my PulpSucker experience. Seeing laterals is obviously pleasant and a good ego boost, but what I like the most with this technique is being confident my cleaning procedure is the best that is."*

**– Dr. Benjamin Boubil**  
Endodontist







# The Original TFRK™ THE FILE RETRIEVAL KIT

**The first system-based approach to separated file removal.**

Since 2016, TFRK has been the #1 File Retrieval System in the world with thousands of successful procedures. All components are presented in an elegantly designed autoclavable cassette.

The Instructions for Use offer a clear step-by-step process designed by Dr. L. Stephen Buchanan.

TFRK™ is a trademark of Dental Engineering Laboratories



## TFRK (THE File Retrieval Kit)

### Acteon (Satelec\*) and EMS versions

**Kit Components (all available as refills) with either Acteon\* or EMS compatibility:**

- 1 - Micro-Explorer Hand Instrument (TFRK-ME)
- 1 - Gutta-Percha Removal Hand Instrument (TFRK-GPR)
- 1 - Modified #3 Gates Glidden Bur (GG-3M)
- 1 - Micro-Trephine bur (TFRK-MT)
- 2 - Ultrasonic Tip Straight (TFRK-S)
- 1 - Ultrasonic Tip 6 o'clock (TFRK-6)
- 1 - Ultrasonic Tip 12 o'clock (TFRK-12)
- 2 - TFRK Loop+
- 2 - TrueTooth Replicas with Broken File Segments
- 1 - Autoclavable Cassette

### Ultrasonic Connection Options:

Satelec, Acteon, Vista P5, NSK, Sybron Endo, Kerr, Obtura Spartan, Adec, J. Morita, Dentsply/Tulsa, Hu-Friedy (S Series), EIE2

\*Satelec is a trademark of Acteon Group



## TFRK Loop+

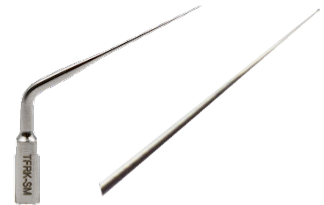
The TFRK Loop+ is a micro-lasso comprised of a tiny wire loop at the end of a stainless-steel cannula and a blue handle with a red sliding retraction button that tightens the loop when pulled back from the tip.

The TFRK Loop+ features a tougher .005 wire over the original version which has a .003 wire. The .005 wire is 148% stronger than the .003 wire version.



## TFRK-S (Straight)

When rotation of the handpiece is limited by oral structures, the straight tip can be used to widen the inside-of-the-curve slot if needed. The main function of the TFRK-S ultrasonic tip is to give ultrasonic agitation to the separated file after space has been cut with one or both micro-spoons. After repeated use, can be resharpener with polishing point in the kit.



## TFRK-6 (6 o'clock) / TFRK-12 (12 o'clock)

The TFRK-6 and TFRK-12 Ultrasonic Tips are micro-spoons with cupped surfaces facing toward or away from the hand-piece, respectively. These instruments are used (dry) to wedge into the space on the inside of the canal curve between the separated file and the canal wall, creating a small space adjacent to the fractured file edge. After the initial use to cut a semicircular slot next to the file segment, use the TFRK-S to complete the semicircular space. The ultrasonic preparation continues until the movement of the broken instrument is confirmed under the magnification.



## TFRK-ME

The Micro-Explorer (TFRK-ME) hand instrument has extremely fine spear-shaped tips with a smooth surface for bypassing ledged canals and exploring the canal for broken files or other impediments. This instrument can be bent to meet the canal curvature so that the TFRK tips can be pre-curved the same way as it is before use. When the tip portion gets worn, it can also be sharpened with the polishing point in the kit.



## TFRK-GPR

The gutta-percha removal instrument (TFRK-GPR) has arrow-shaped barbed cones on both ends to engage filling material remnants during removal procedures. Also great for smoothing ledges in RT cases.



# Buchanan Hand Instruments

## Buchanan Minimally-Invasive Endodontic Pluggers

The Buchanan Minimally Invasive Endodontic Pluggers are ideal for any dentist working through minimally invasive access cavities.

Either end of these double-ended stainless steel pluggers may condense and control the movement of gutta percha under pressure; the smallest sizes can be used for condensing even the most radically curved canals.

Available in sizes for small, medium, and large canals.

20/30, 40/50, 60/70, 80/90, & 1.10/1.30



## Buchanan Continuous Wave Pluggers

The Buchanan Continuous Wave Pluggers are designed to compliment the technique, featuring flexible NiTi apical pluggers on one end and rigid SS orifice pluggers on the other end.

Available in sizes for small, medium, and large canals.

25 NiTi/75 SS, 40 NiTi/90 SS, & 70 NiTi/1.20 SS



### DG-16BE (Bent Ends)

The Endodontic Explorer with Bent Ends DG-16B allows the clinician to easily locate canals—especially the elusive MB2—through MIE access openings.

This instrument is made from the highest quality materials to provide flexibility, strength, tactile sensitivity, and resilience that clinicians need when exploring and assessing the access cavity and canals.



### DG-16

The Endodontic Explorer DG-16 is made from the highest quality materials providing flexibility, strength, tactile sensitivity, and resilience that clinicians need when exploring and assessing the access cavity and canals.



### Spoon Excavator

The Spoon Excavator is a popular instrument for easy access and removal of debris and decay. Available in size elongated small, medium, and large.





# TRUETOOTH™ & TrueJaw™

## 3D printed Replicas

Accurately named “Replicas” rather than “Models”  
Only TrueTooth and TrueJaw mimic human anatomy at the bench.

With anatomy derived from scanning thousands of teeth, a patented radiopaque 3D ink, and the ability to incise and suture the replica’s soft tissue; the real benefits of iterative training can be realized.

PlanB has the industry’s most expansive portfolio of training replicas with our 150 unique variations.

Check out our website [www.planbdental.com](http://www.planbdental.com) for our complete offering or to download a comprehensive digital catalog.

Take it from world-renowned clinician and educator Dr. Gilberto Debelian:



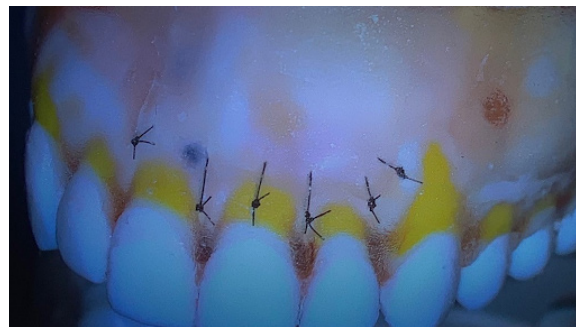
*“TrueJaws are exceptional teaching models used at our Endo Inn courses. The bone and tooth structures are excellent replicas which helps the participants and teachers to learn and teach the minimally-invasive techniques of endodontic microsurgery.”*

## TrueJaw Endo Surgery

Endo Surgery Replicas have authentic periradicular lesions associated with five teeth in each maxillary and mandibular jaws; three of these lesions perforate the cortical plate, and two lesions lie hidden behind the buccal cortex.

TrueJaw Endo Surgery is available as an Upper and Lower set or each arch individually.

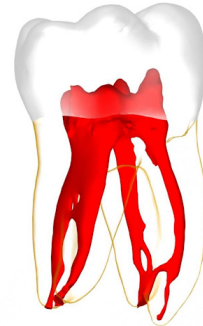
TrueJaw is also available in formats for Implant and Extraction Training.



## TrueTooth-The Classics

This is the quintessential **4-canal Maxillary Molar**. The pulp chamber has moderate calcification, its MB2 canal has apical terminus separate from the MB1, each communicating twice through mid-root isthmuses and ultimately bifurcating in the last 1-2mm's. Palatal canal has a large .39mm apical diameter with buccal hook and branching lateral canal.

Classic **4-canal Mandibular First Molar**. The large pulp chamber is ideal for practicing access procedures. Coronal half of these four canals are large and uncomplicated. At the mid-root region in the distal, the large ovoid canal bifurcates into DB and DL canals with smooth distal curvature and lateral irregularity.



## Instructor's Choice

Maxillary Central Incisor with mid-root lateral canal and large apical bifurcation. Presents a moderate challenge during the access procedure as part of the pulp chamber is calcified, receding to the CEJ. Apical bifurcation provides ideal hands-on training for bending files and negotiating around apical irregularities.

Mandibular Premolar with a single root and canal. Medium-sized pulp chamber is easily found during access. The apical canal is small and has multi-planer curvature, ideal for learning rotary file techniques. Requires file bending and effective direction of the bent file tip to reach terminus.



# PlanB Endodontic Cordless Motor

The PlanB Motor features full functionality, miniKUT presets, a super small head, wireless charging, excellent ergonomics and a built in Apex Locator. Auto start and stop functions offer an extra level of efficiency and convenience. It has a top speed of 2,500 RPM!

## An overview of features:

- Wireless handpiece
- Built-in apex locator
- Adjustable reciprocating angle - (10° interval; adjustment range: 20°- 340°)
- 360° rotatable 6:1 contra-angle
- Top speed of 2,500 rpm
- Super small head for excellent field-of-vision
- Auto Start and Auto Stop functions add speed and elegance to procedure
- miniKUT preprogrammed settings plus several competitive file systems and 10 customizable
- Rechargeable 2000mAh Lithium battery



## The long overdue update to the Access Bur space.

These are engineered to prepare an MIE access with speed and efficiency.

# MIE Access Diamonds

The PlanB Access Diamonds more than replace the LA Axxess™\* Bur, as they deliver the ideal MIE access for the miniKUT series as well as other brands.

\*LA Axxess is a trademark of Kerr

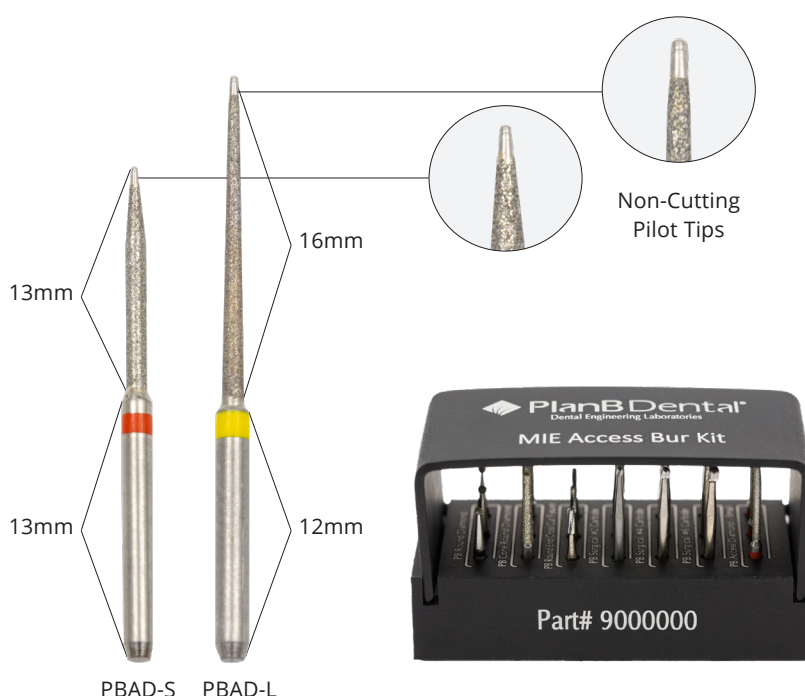


# MIE Bur Kit

## The PlanB MIE Kit features 3 each of:

- Round Diamond
- Tapered Diamond
- Round End Cross-Cut Fissure
- #2 Round Carbide
- #4 Round Carbide
- #6 Round Carbide
- PBAD-S Guided Access Bur
- PBAD-L\* Guided Access Bur

\*Not included in kit



## Nickel Titanium Hand Files

PlanB Nickel Titanium Hand Files deliver exceptional performance. You won't find a sharper NiTi Hand Instrument. A perfect mix of flexibility, durability and sharpness.

Available in sizes 08–60 in lengths of 21, 25 and 31 mm.



## Stainless Steel Hand Files

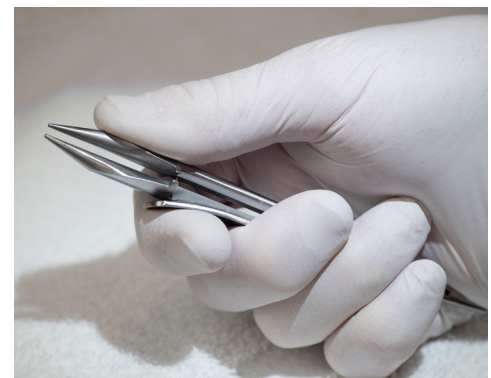
You just can't call yourself an Endo company without a dependable Stainless Steel hand file. PlanB has them.

Available in sizes 08–60 in lengths of 21, 25 and 31 mm.



## Buchanan EndoBender2™

- Precise file bending to the first flute
- Bends and straightens SS and NiTi files (even those with shape memory)
- Bends pluggers
- Bends PulpSucker Cannulae
- Twin bending anvils enable bending with either hand in either direction
- Stainless steel
- Fully autoclavable
- This is a lifetime tool





## More from PlanB



### Thumlok Castroviejo – 18.2cm straight

- Tungston Carbide Tips
- Snagless – no cross-joint at the tips to snag a suture during knot tying
- Holds every needle size
- Made of Sonic Steel. The jaws flex while remaining true
- Ideal for adjusting PulpSucker Cannulae



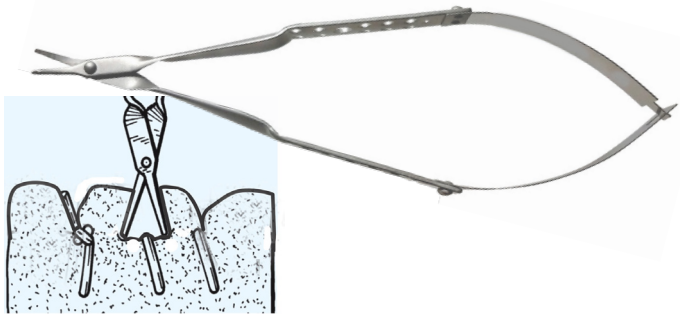
### Raptor Forceps 14.75cm E/W

- Ideal for Root-Tip or Post-Removal
- Made of Sonic Steel. The jaws flex while remaining true
- Perfect for placing PulpSucker Cannulae



### SofTouch Suture Scissors 14.25cm Curved

- Safely cuts sutures without irritating tissue
- Enhanced tactile touch lets you know when you've located the suture.
- Ball-point tips softly move tissue aside



\*Laschal is a Registered Trademark of Laschal Surgical

## Check-Film II<sup>®</sup>

Articulating Film

The PlanB Check-Film offering provides the Clinician an ideal choice in Pre-Cut Articulating Film.

Only 21 microns thick, universal in application, stretchable, and yet tear resistant, available in 1 or 2 sided, and packaged in convenient 280 strip tubs.

### PlanB Check-Film II comes in:

- Red/Black
- Red/Red
- Black/Black
- Red only (1 sided)





The EndoCowboy is an endodontic instrument that allows dentists to grasp, loosen, and remove fractured files deep in the root canal. Due to the immense tensile strength of the specially designed lasso wire, the EndoCowboy not only serves as a pure gripping instrument but can also remove stuck files with considerable leverage. As a result, the EndoCowboy can be used earlier in the treatment process, saving precious time.

#### Kit Includes:

- EndoCowboy autoclavable device
- Hard Case
- (3) Yellow Lasso Tips: 0.12 mm wire
- (3) Blue Lasso Tips: 0.1 mm wire

Green Lasso Tips: 0.08 are available as a refill



#### Focus on the File

We have placed the adjustment wheel used to tighten the lasso at the rear end of the EndoCowboy®. This allows the assistant to take over the job of tightening the lasso. As a result, the dentist can concentrate fully on the placement of the lasso and the removal of the file. This also avoids any shaking when tightening the lasso.



\*EndoCowboy is a Registered Trademark of Köhrer Medical Engineering

# Irrigation Accessories from Vista Dental

## Stropko Irrigator™

The Stropko™ Irrigator – an instrument used for precise control of air and/or water in any dental procedure (crown, bridge, restorative, endodontic, periodontic, surgical, implant, etc.) that requires irrigation or drying during the process. The Stropko™ Irrigator is especially useful when performing procedures with the Surgical Operating Microscope when precision & control of the irrigation is essential. Use in every dental procedure to assure a gentle and effective stream of water and/or air for superior and efficient cleaning or drying of any surface or working area.



22g

20g

18g

All available in packs of 20



2" Original Length



3.5" XL Length

\*Stropko is a Registered Trademark of Vista Dental Products

## MST Visco-Tip™



MST: Material Saving Technology

Conventional tips trap a significant amount of unusable material inside of the hub. MST minimizes the internal volume of the tip by up to 87%



Conventional tip



MST Visco-Tip™



Bendable, flexible 25g tip improves flow and placement of viscous materials.

Designed for Bioceramics and Calcium Hydroxide.

Available in 50 pack refills

\*MST Visco-Tip is a Registered Trademark of Vista Dental Products



# Founders



Dr. L. Stephen Buchanan



Steve Paskin



Romeo Caicedo

## Innovation in the endodontic industry

Our products utilize a global panel of every-day practicing clinicians, university-based researchers, and CE leaders for input and direction. The leader of our product development process, Dr. Steve Buchanan, has more experience and success in Endodontic innovation than just about anyone in the industry. After all, the best dental products are not created in the lab, they are created at the chair. Our goal is to develop products that blend clinical efficacy, economic benefits, and patient friendliness.

## We are committed to MIE outcomes

However you define it for the patient in the chair. PlanB Dental stands foursquare for the preservation of tooth structure during RCT because minimizing loss of structural integrity is the only way to ensure endodontically-treated teeth outlive their owners. As such, PlanB Dental's miniKUT files cut the smallest preparations in the industry, while our PS System cleans canals with 15/.03 shapes through an access cavity that is less than 1.0 mm in diameter—all in no more than 15 minutes.

## Vast Experience driving change

With over 90 years of combined experience in the dental field, we formed PlanB Dental because it was clear to us that there was a developmental vacuum in the field of endodontics. All three of us built our careers driving change through clinical experience, practical education, product engineering, and personal relationships. Excellence in dental product development requires all of the above. Our goal is to help you chase Excellence by offering you a PlanB to the status quo.

Thanks for your interest. We hope to see you at The Apex,

Dr. L. Stephen Buchanan

PlanB Dental  
315 Bollay Drive, Suite 150  
Goleta, CA 93117

800.528.1590  
[www.PlanBDental.com](http://www.PlanBDental.com)

