

miniKUT
MINIMALLY INVASIVE FILE SYSTEM

**Designed by Endodontists
for Endodontists**

miniKUT[®]

MINIMALLY INVASIVE FILE SYSTEM

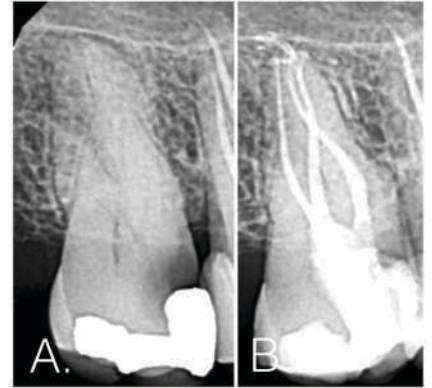


Made from US Nickel Titanium



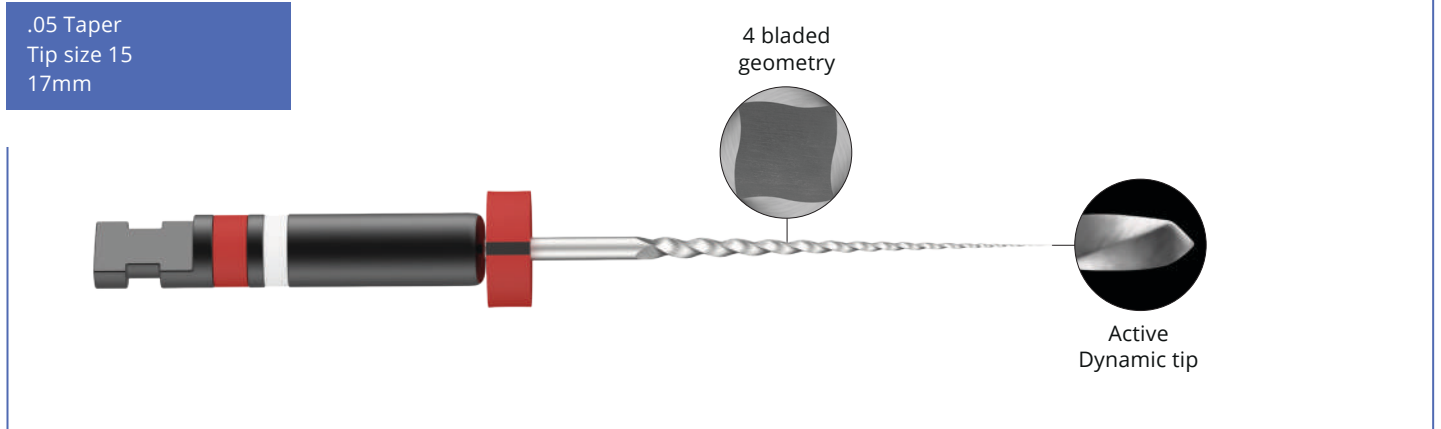
“As we think about preserving natural dentin to help ensure a lifelong restoration, the name miniKUT became so appropriate. The goal is to empower the clinician and not limit you. I hope you find the miniKUT Rotary NiTi System as beneficial to your patients as I do...”

– Dr. L. Stephen Buchanan



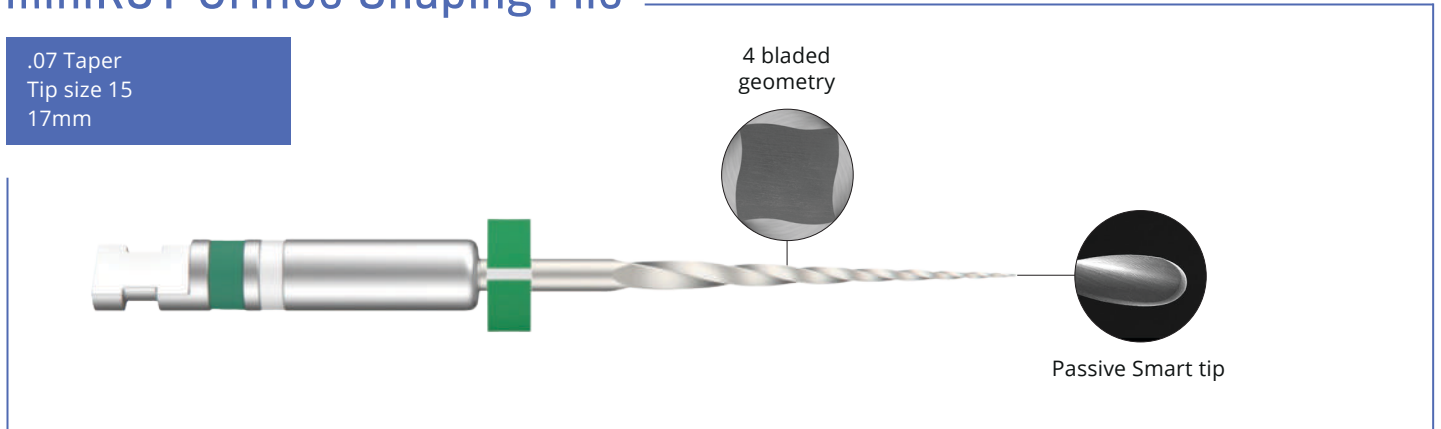
miniKUT MB2 File - “The BlackJack™”

.05 Taper
Tip size 15
17mm



miniKUT Orifice Shaping File

.07 Taper
Tip size 15
17mm

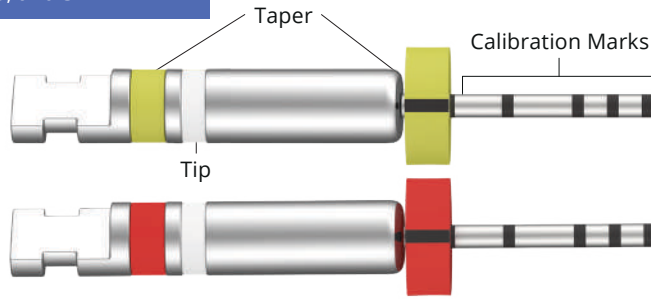


Taper Legend

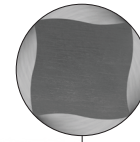
Taper indicated on Stop and Top Color Band	.03 – Yellow	.07 – Green
	.05 – Red	.08 – Black
	.06 – Blue	

miniKUT ETM Negotiating Files

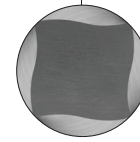
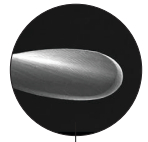
.03 Taper and .05 Taper
Tip size 15
21, 25, and 31mm



4 Bladed geometry



Passive Smart tip



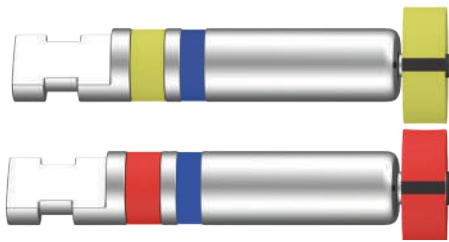
4 Bladed geometry



Active Dynamic tip

miniKUT Shaping Files

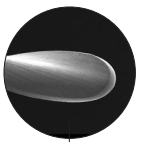
.03 Taper and .05 Taper
Tip sizes 20-45
21, 25, and 31mm



2 Bladed geometry



Passive Smart tip



2 bladed geometry



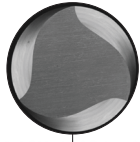
Passive Smart tip

miniKUT Retreatment File

.06 Taper and .08 Taper
Tip sizes 20 (06), 25 (08)
21 and 25mm



3 Bladed geometry



Passive Smart tip



3 Bladed geometry



Passive Smart tip

Calibration Legend

21mm: 18, 19, 20mm
25mm: 18, 19, 20, 22, 24mm
31mm: 24, 25, 26, 28, 30mm

Maximum Flute Diameter

.03 Taper: 0.80mm
.05 Taper (20-45): 1.0mm
.05 Taper (15): 0.80mm
- Including Blackjack -
.06 Taper: 1.0mm
.07 Taper: 1.0mm
.08 Taper: 1.0mm

miniKUT Procedure Packs

3 Files	
Small Canals	15/.07, 15/.03, 25/.03 (17mm & 25mm)
Large Canals	15/.07, 25/.05, 35/.05 (17mm & 25mm)



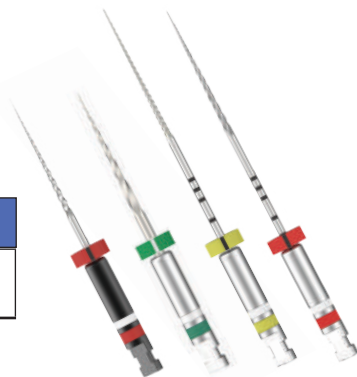
miniKUT MB2 Files (The BlackJack)

6 Pack
15/.05, 17mm



miniKUT Rotary Negotiation Sampler Pack

4 Files
15/.07, 15/.05 (mb2), 15/.03, 15/.05 (17mm & 25mm)



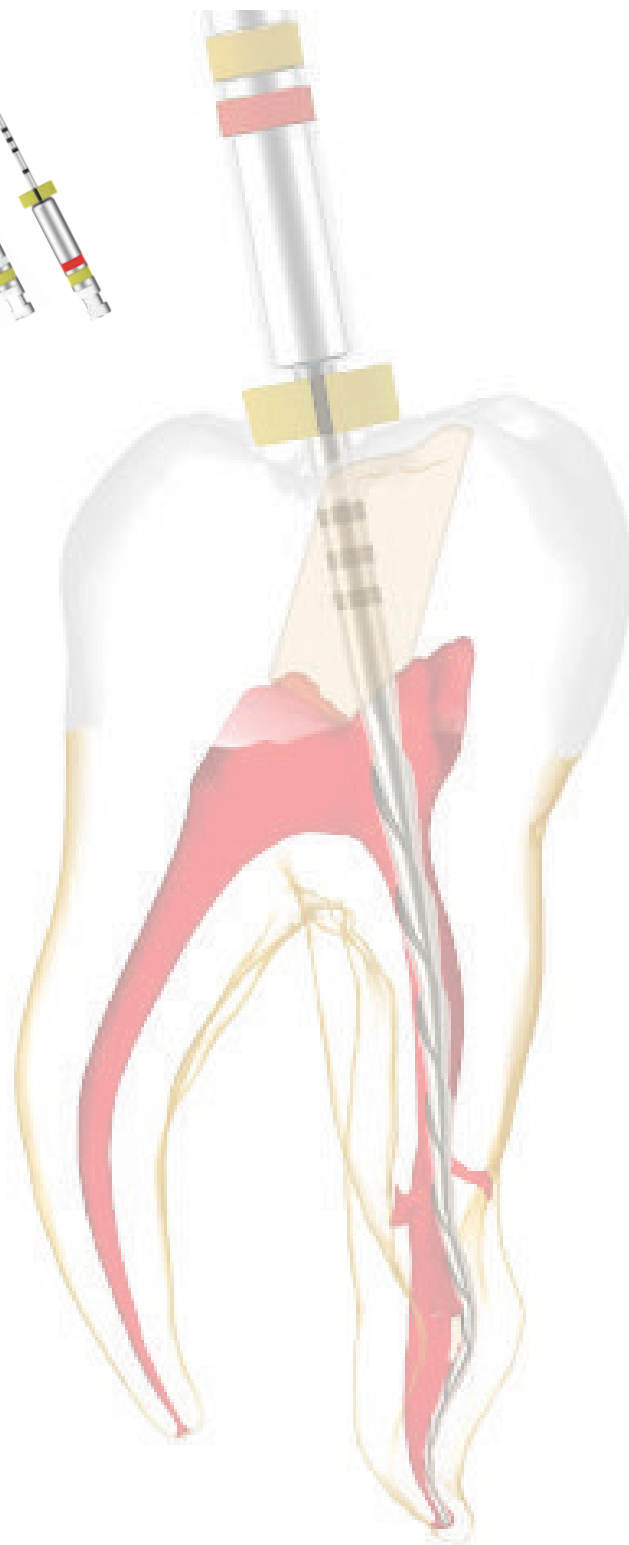
miniKUT Orifice Shaping Files

6 Pack
15/.07, 17mm



miniKUT EZP Negotiating Files

6 Pack
15/.03, 15/.05. (21mm, 25mm, & 31mm)



miniKUT Shaping Files

6 Pack
Sizes 20 - 45 Tapers .03 & .05 21mm, 25mm, & 31mm



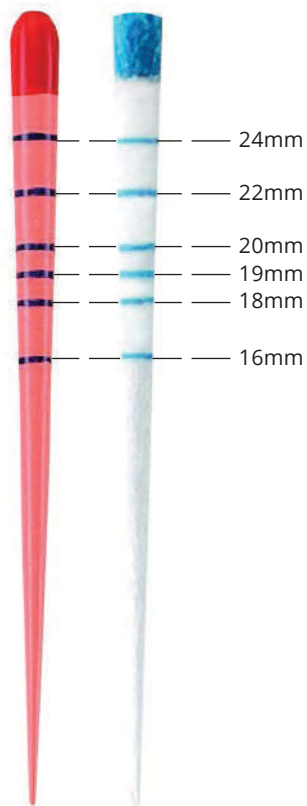
miniKUT Retreatment Files

3 Pack
Sizes 20/.06 (21mm & 25mm) 25/.08 (21mm & 25mm)



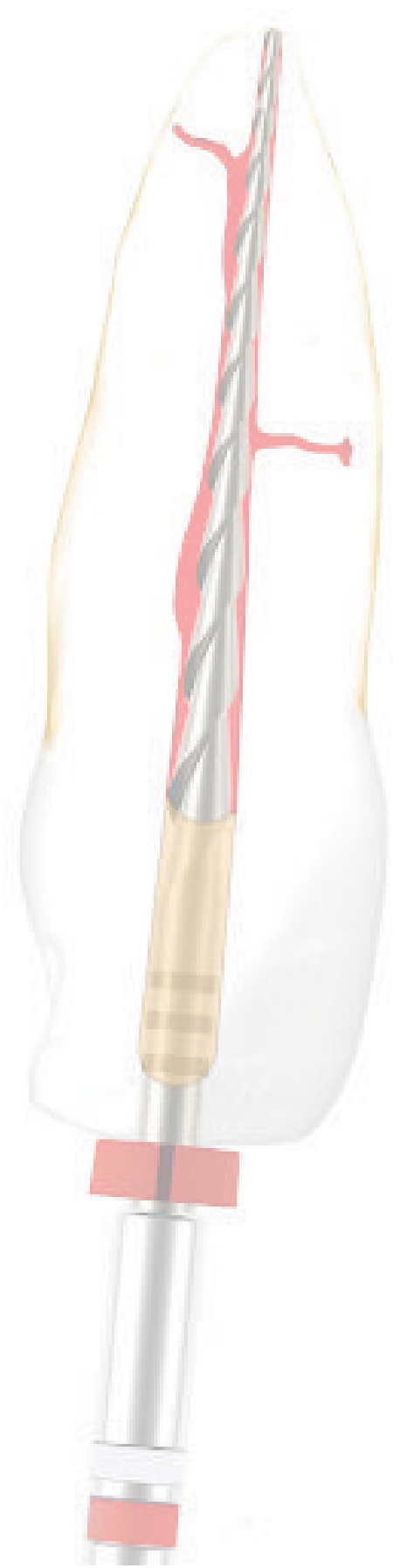
miniKUT Gutta Percha Points

60 Points per Pack
Sizes: .15 - .45 Tapers: .03 & .05
Assorted Packs: 15 - 40 (.03 & .05 Taper)



miniKUT Paper Points

100 Points per Pack
Sizes: 15 - 45 Tapers: .03 & .05
Assorted Packs: 15 - 40 (.03 & .05 Taper)



miniKUT EZP



This case by Christophe Verbanck illustrates how the combination of flexibility and core strength of miniKUT EZP 15/03 benefits deep multi-dimensional curves.



"The miniKUT feature I appreciate most is the fully radiused "Duckbill" tip. It not only negates any potential for ledging but also eliminates the use of hand files."

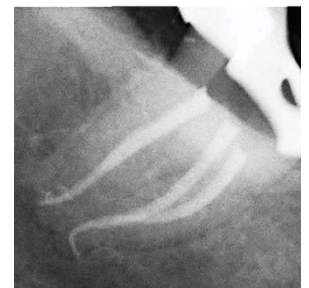
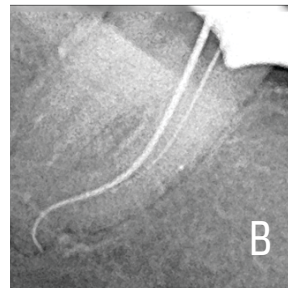
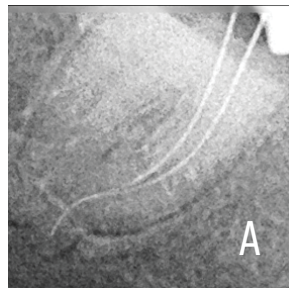
- **Dr. Christophe Verbanck**
Endodontist



miniKUT EZP



This case by Marc Kaloustian demonstrates using the miniKUT EZP 15/03 as "First File to Length". Image A features no patency with a 10K File. Image B shows patency with a miniKUT 15/03 run at 800rpm.



"I like the great ability of miniKUT files to shape quickly, safely, in a conservative way, narrow long canals with the perfect respect of the original anatomy."

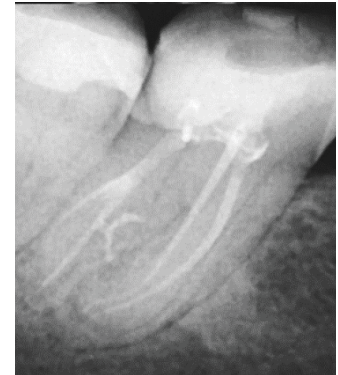
- **Dr. Marc Kaloustian**
Endodontist



miniKUT EZP



This case by Bobby Nadeau was finished to a miniKUT 15/.03 in all canals highlighting the potential for deep minimal shaping in curved canals.



"The MiniKUT 15/.03 file is extremely flexible, efficient and safe, even in the most challenging canals. The matching 15/.03 gutta percha points also fit the preparation perfectly."

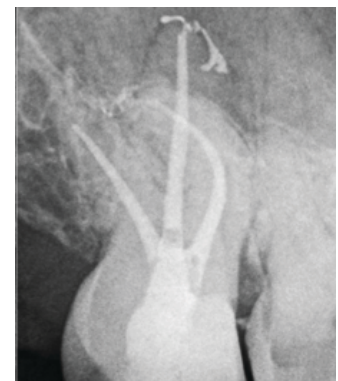
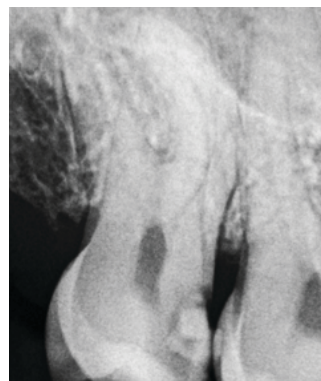
– Dr. Bobby Nadeau
Endodontist



miniKUT Small Canals Procedure Pack



This case by Rafael Marte Fiallo demonstrates how the miniKUT Small Canals Procedure Pack provides an ideal 3 file set-up. Shape the orifice with the OS file at 1000 rpm, and get to length with EZP 15/03. Finish with the miniKUT 25/03.



"I'm very impressed with the way miniKUT files behave in my hands. They are fast, secure, and well balanced. it is a game changing file system."

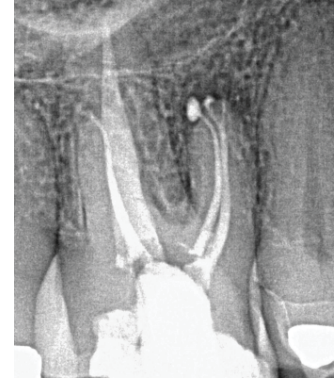
– Dr. Rafael Marte Fiallo
Endodontist



miniKUT MB2 - “The BlackJack™”



This case by Roger Warren demonstrates how the 17mm BlackJack™ with its Dynamic tip is the ideal instrument to capture the orifice and coronal shaping of a calcified MB2.



“The BlackJack™ has become my go-to for accessing MB2s. The subtly angled Dynamic Tip provides just enough cutting to find these often calcified canals.”

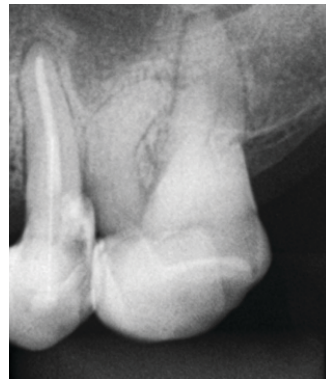
- **Dr. Roger Warren**
Endodontist



miniKUT MB2 - “The BlackJack™”



In this case by Milena Perraro Martins featured the miniKUT MB2 15/05 in all canals demonstrating the minimal coronal shaping.



“miniKUT files are safe to use in canals with extreme curvature, and the miniKUT MB2 file can be used in all canals as an orifice shaper.”

- **Dra Milena Perraro Martins**
Endodontist



miniKUT Shaping Files



This case by JT Crepps highlights how the precise cutting of the miniKUT 20/03 helps preserve the natural anatomy of even delicate canals.



"miniKUT has some of the most conservative rotary files on the market, which makes it easier to conserve tooth structure. Their gutta percha fits very well, which is not the case for other conservative files on the market."

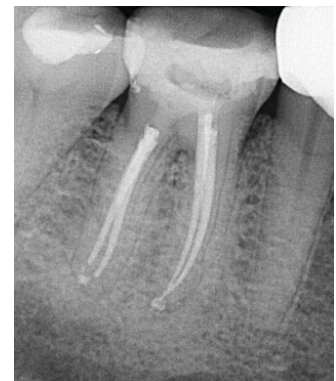
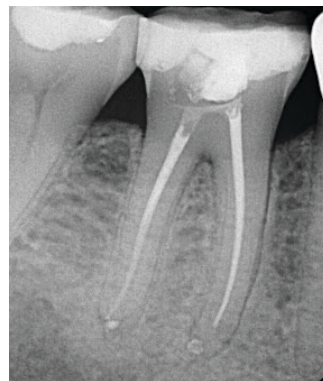
- **Dr. JT Crepps**
Endodontist



miniKUT Retreatment Files



This case by Brett Gilbert featured the miniKUT 06 Retreatment file with its 3-bladed cross section which provides the right balance of strength and room for GP removal running at 1,000 rpm. Notice how the canal shape was minimally maintained.



"I perform non-surgical retreatment cases in my practice everyday. For years I have been looking for a minimally invasive file that was strong and flexible enough to engage and remove gutta percha without overshaping the canals. I am grateful to have found the MiniKUT Retreatment File for this purpose. These files help me get the job done efficiently and conservatively."

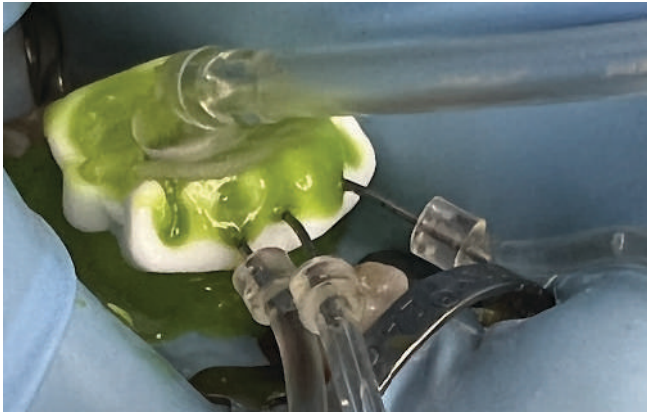
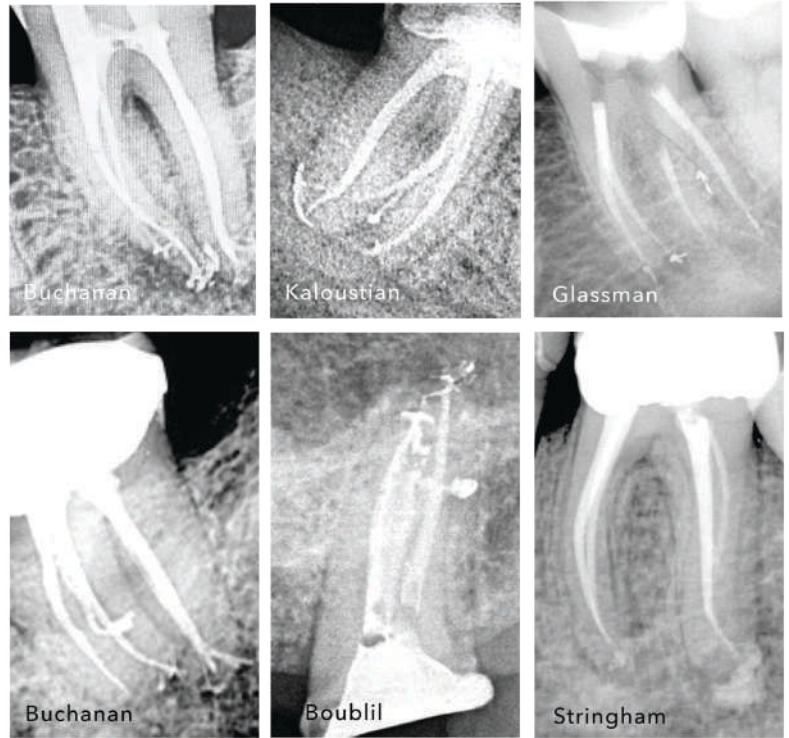
- **Dr. Brett Gilbert**
Endodontist



PulpSucker®

A MULTI-CANNULAR NEGATIVE PRESSURE IRRIGATION DEVICE

Get results like these, even through a ninja access...all without an electric cord.



Pulpsucker

The patented* PulpSucker uses closed-system negative pressure to efficiently and effectively irrigate root canals. Only five minutes of hands-on prep time is required, after which the PulpSucker completes multi-cannular cleaning in hands-free mode.

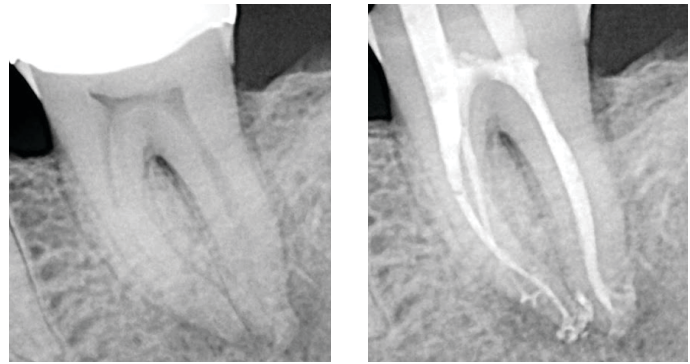
Single-use, everything you need is in the kit.

Available in Molar, Premolar, and Anterior configurations.



*Pond #6,971,878 Buchanan #15,750,248

This vital case had 3 primary canals and a multiplicity of lateral canals. The distal root harbors an apical delta system. This was an MIE case with 2 separate ninja access openings. PulpSucker is the only multi-cannular closed system that could operate through these tiny openings.

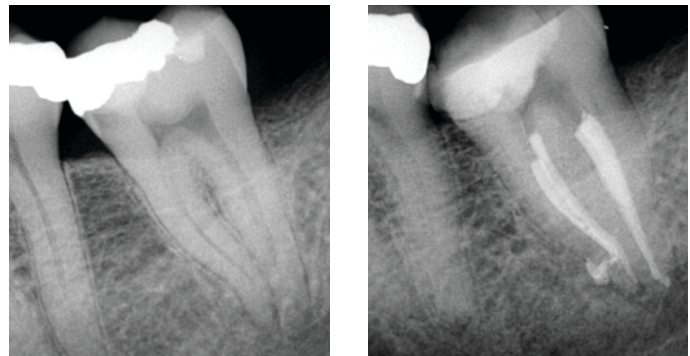


"My decades long journey in understanding the art and science of Endodontics has led me to the development of The PulpSucker. I hope you find it as useful as I have."

- Dr. L. Stephen Buchanan
Endodontist



Non-vital pulp with symptomatic apical periodontitis. Note the lateral canal in the apical 1/3rd of the mesial root!

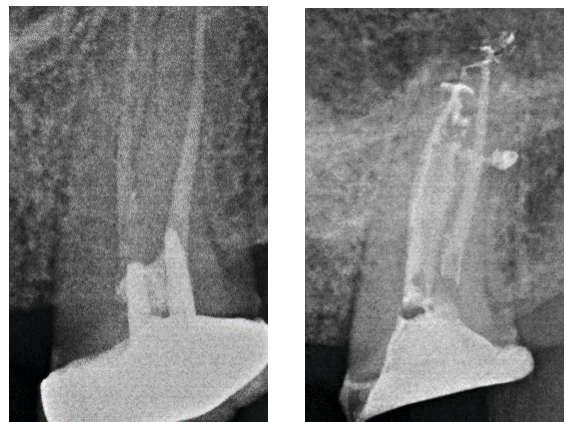


"As I learn more through my clinical experience, I think The PulpSucker has the potential to be a relevant option for robust RCT cleaning."

- Dr. Gary Glassman
Endodontist



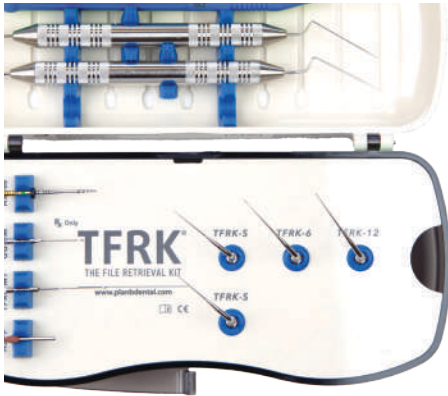
A endodontically-treated and restored tooth, with double post and terrible root filling. That's 90% of my cases! C shape, and I only retreated the two canals, and left the isthmus being pulp sucked and voila! Continuous wave obturation of course.



"I have enjoyed my PulpSucker experience. Seeing laterals is obviously pleasant and a good ego boost, but what I like the most with this technique is being confident my cleaning procedure is the best that it is."

- Dr. Benjamin Boubilil
Endodontist





The Original
TFRK®
 THE FILE RETRIEVAL KIT

The first system-based approach to separated file removal.

Since 2016, TFRK has been the NUMBER 1 File Retrieval System in the world with thousands of successful procedures.

All components are presented in an elegantly designed autoclavable cassette.

The Instructions for Use offer a clear step-by-step process designed by Dr. L. Stephen Buchanan.

TFRK® is a trademark of Dental Engineering Laboratories



TFRK (THE File Retrieval Kit)

Acteon (Satelec*) and EMS versions

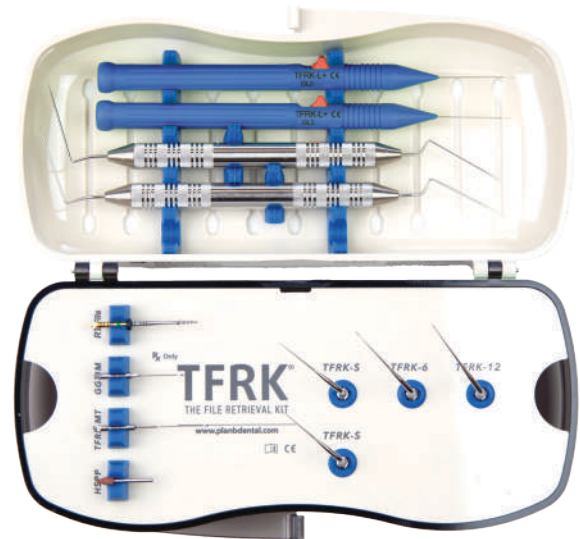
Kit Components (all available as refills) with either Acteon* or EMS compatibility:

- 1 - Micro-Explorer Hand Instrument (TFRK-ME)
- 1 - Gutta-Percha Removal Hand Instrument (TFRK-GPR)
- 1 - Modified #3 Gates Glidden Bur (GG-3M)
- 1 - Micro-Trephine bur (TFRK-MT)
- 2 - Ultrasonic Tip Straight (TFRK-S)
- 1 - Ultrasonic Tip 6 o'clock (TFRK-6)
- 1 - Ultrasonic Tip 12 o'clock (TFRK-12)
- 1 - Rotary File, 70/.10, 21mm (TFRK-RT)
- 2 - TFRK Loop+
- 2 - TrueTooth Replicas with Broken File Segments
- 1 - Autoclavable Cassette

Ultrasonic Connection Options:

Satelec, Acteon, Vista P5, NSK, Sybron Endo, Kerr, Obtura Spartan, Adec, J. Morita, Dentsply/Tulsa, Hu-Friedy (S Series), EIE2

*Satelec is a trademark of Acteon Group



TFRK Loop+

The TFRK Loop+ is a micro-lasso comprised of a tiny wire loop at the end of a stainless-steel cannula and a blue handle with a red sliding retraction button that tightens the loop when pulled back from the tip.

The TFRK Loop+ features a tougher .005 wire over the original version which has a .003 wire. The .005 wire is 148% stronger than the .003 wire version.



TFRK-S (Straight)

When rotation of the handpiece is limited by oral structures, the straight tip can be used to widen the inside-of-the-curve slot if needed. The main function of the TFRK-S ultrasonic tip is to give ultrasonic agitation to the separated file after space has been cut with one or both micro-spoons. After repeated use, can be resharpener with polishing point in the kit.



TFRK-6 (6 o'clock) / TFRK-12 (12 o'clock)

The TFRK-6 and TFRK-12 Ultrasonic Tips are micro-spoons with cupped surfaces facing toward or away from the hand-piece, respectively. These instruments are used (dry) to wedge into the space on the inside of the canal curve between the separated file and the canal wall, creating a small space adjacent to the fractured file edge. After the initial use to cut a semicircular slot next to the file segment, use the TFRK-S to complete the semicircular space. The ultrasonic preparation continues until the movement of the broken instrument is confirmed under the magnification.



TFRK-ME

The Micro-Explorer (TFRK-ME) hand instrument has extremely fine spear-shaped tips with a smooth surface for bypassing ledged canals and exploring the canal for broken files or other impediments. This instrument can be bent to meet the canal curvature so that the TFRK tips can be pre-curved the same way as it is before use. When the tip portion gets worn, it can also be sharpened with the polishing point in the kit.



TFRK-GPR

The gutta-percha removal instrument (TFRK-GPR) has arrow-shaped barbed cones on both ends to engage filling material remnants during removal procedures. Also great for smoothing ledges in RT cases.



TFRK-RT

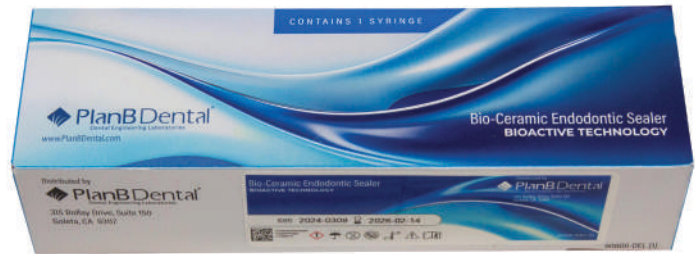
A 70/.10, 21mm rotary file ideal for troughing.



PlanB Dental's Bio-Ceramic Sealer

Employs Bioglass to promote Bio-Regenerative Healing

- Ready to Use: Injectable, Single-Component, Smooth Flowing
- Anti-Bacterial: High Alkaline (pH)
- Dimensionally Stable: Low Solubility with high wash out resistance
- A Faster Set: Set time under 1 hour
- Radiopacity exceeds the leading brands



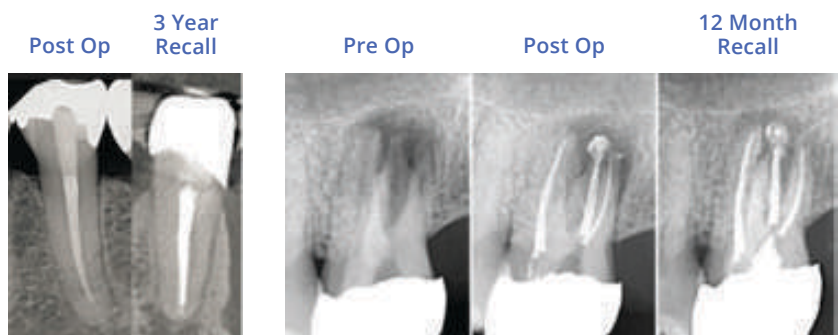
Refill includes 1 (2g) syringe and 20 MST Visco™ Tips

	PlanB Bioactive Endo Sealer	EndoSequence™ BC Sealer	Edge™ Bioceramic	AH Plus™ Bioceramic
Manufacturer	PlanB Dental	Brasseler	Edge Endo	Dentsply Sirona
Radiopacity (mm Al)*	8.1	7.5	6.0	9.0
Root Canal Sealer Contents	2g Syringe with 20 MST Visco Tips	2g Syringe with 15 Tips	2g Syringe with 15 Tips	3g Syringe with 20 Tips
Set Time (min)*	60	> 120	660	> 120
Solubility (%)*	1.0%	2.9%	< 3%	1.4%

*Internal testing

Post-Op Radiographs

Looking at the premolar post-op versus 3 year recall, it's clear we don't see any wash out or change in the sealer over time.



EndoSequence is a Brasseler Trademark, Edge is an Edge Trademark, AH Plus is a Dentsply Trademark.

Buchanan Hand Instruments

Buchanan Minimally Invasive Stainless Steel Endodontic Pluggers

The Buchanan Minimally Invasive Endodontic Pluggers are ideal for any dentist working through minimally invasive access cavities.

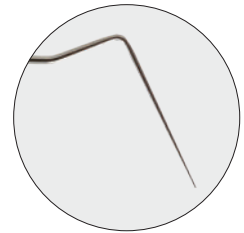
Available in sizes for small, medium, and large canals.
20/30, 40/50, 60/70, 80/90, & 1.10/1.30



Buchanan Continuous Wave Pluggers

The Buchanan Continuous Wave Pluggers are designed to compliment the technique, featuring flexible NiTi apical pluggers on one end and rigid SS orifice pluggers on the other end.

Available in sizes for small, medium, and large canals.
25 NiTi/75 SS, 40 NiTi/90 SS, & 70 NiTi/1.20 SS



DG-16BE (Bent Ends)

The Endodontic Explorer with Bent Ends allows the clinician to easily locate canals—especially the elusive MB2—through MIE access openings.



DG-16

The Endodontic Explorer is made from the highest quality materials providing flexibility, strength, and resilience.



Spoon Excavator

Available in elongated small, medium, and large sizes.



TRUETOOTH® & TrueJaw®

3D printed Replicas

Accurately named "Replicas" rather than "Models"
Only TrueTooth and TrueJaw mimic human anatomy at the bench.

With anatomy derived from scanning thousands of teeth, a patented radiopaque 3D ink, and the ability to incise and suture the replica's soft tissue; the real benefits of iterative training can be realized.

PlanB has the industry's most expansive portfolio of training replicas with over 150 unique variations.

Check out our website www.planbdental.com for our complete offering or to download a comprehensive digital catalog.

Take it from world-renowned clinician and educator Dr. Gilberto Debelian:



"TrueJaws are exceptional teaching models used at our Endo Inn courses. The bone and tooth structures are excellent replicas which helps the participants and teachers to learn and teach the minimal invasive techniques of endodontic microsurgery."

TrueJaw Endo Surgery

EndoSurg models have authentic periradicular lesions associated with five teeth in the maxillary and eight teeth in mandibular jaws. Five lesions in the maxillary (#3, #6, #9, #12, #14) perforate and two lesions lie hidden behind the buccal cortex. Eight lesions in the mandibular (#19, #20, #21, #23, #24, #27, #29, #30) where seven have an open apex.

TrueJaw Endo Surgery is available as an Upper and Lower set or each arch individually.

TrueJaw is also available in formats for Implant



TrueTooth-The Classics

This is the quintessential **4-canal Maxillary Molar**. The pulp chamber has moderate calcification, its MB2 canal has apical terminus separate from the MB1, each communicating twice through mid-root isthmuses and ultimately bifurcating in the last 1-2mm's. Palatal canal has a large .39mm apical diameter with buccal hook and branching lateral canal.

Classic **4-canal Mandibular First Molar**. The large pulp chamber is ideal for practicing access procedures. Coronal half of these four canals are large and uncomplicated. At the mid-root region in the distal, the large ovoid canal bifurcates into DB and DL canals with smooth distal curvature and lateral irregularity



Instructor's Choice

Maxillary Central Incisor with mid-root lateral canal and large apical bifurcation. Presents a moderate challenge during the access procedure as part of the pulp chamber is calcified, receding to the CEJ. Apical bifurcation provides ideal hands-on training for bending files and negotiating around apical irregularities.

Mandibular Premolar with a single root and canal. Medium-sized pulp chamber is easily found during access. The apical canal is small and has multi-planer curvature, ideal for learning rotary file techniques. Requires file bending and effective direction of the bent file tip to reach terminus.



PlanB Endodontic Cordless Motor

The PlanB Motor features full functionality, miniKUT presets, a super small head, wireless charging, excellent ergonomics and a built in Apex Locator. Auto start and stop functions offer an extra level of efficiency and convenience. It has a top speed of 2,500 RPM!

An overview of features:

- Wireless handpiece
- Built-in apex locator
- Adjustable reciprocating angle - (10°interval; adjustment range: 20°- 340°)
- 360° rotatable 6:1 contra-angle
- Top speed of 2,500 rpm
- Super small head for excellent field-of-vision
- Auto Start and Auto Stop functions add speed and elegance to procedure
- miniKUT preprogrammed settings plus several competitive file systems and 10 customizable settings
- Rechargeable 2000mAh Lithium battery



The long overdue update to the Access Bur space.

These are engineered to prepare an MIE access with speed and efficiency.

MIE Access Diamonds

The PlanB Access Diamond more than replaces the LA Axxess™* Bur as the ideal MIE access for the miniKUT series as well as other brands.

*LA Axxess is a trademark of Kerr



MIE Bur Kit

The PlanB MIE Kit features 3 each of:

- Round Diamond
- Tapered Diamond
- Round End Cross-Cut Fissure
- #2 Round Carbide
- #4 Round Carbide
- #6 Round Carbide
- PBAD-S Guided Access Bur



Nickel Titanium Hand Files

PlanB Nickel Titanium Hand Files deliver exceptional performance. You won't find a sharper NiTi Hand Instrument. A perfect mix of flexibility, durability and sharpness.

Available in sizes .08-.60 in lengths of 21, 25 and 31mm.



Stainless Steel Hand Files

You just can't call yourself an Endo company without a dependable Stainless Steel hand file. PlanB has them.

Available in sizes .08-.60 in lengths of 21, 25 and 31mm.



Buchanan EndoBender2™

- Precise file bending to the first flute
- Bends and straightens SS and NiTi files (even those with shape memory)
- Bends pluggers
- Bends PulpSucker Cannulae
- Twin bending anvils enable bending with either hand in either direction
- Stainless steel
- Fully autoclavable
- This is a lifetime tool



LASCHAL®

INSTRUMENTS THAT WORK

Thumlok Castroviejo – 18.2cm straight

- Tungston Carbide Tips
- Snagless – no cross-joint at the tips to snag a suture during knot tying
- Holds every needle size
- Made of Sonic Steel. The jaws flex while remaining true
- Ideal for adjusting PulpSucker Cannulae



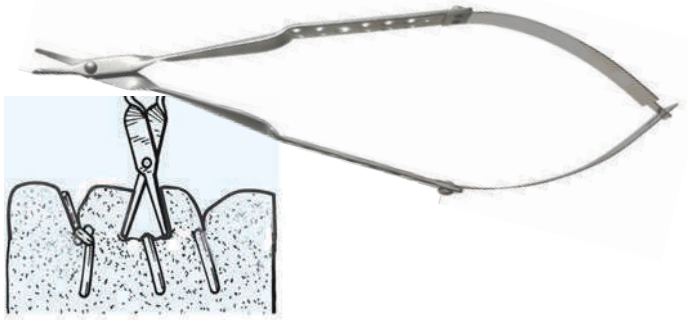
Raptor Forceps 14.75cm E/W

- Ideal for Root-Tip or Post-Removal
- Made of Sonic Steel. The jaws flex while remaining true
- Perfect for placing PulpSucker Cannulae



SofTouch Suture Scissors 14.25cm Curved

- Safely cuts sutures without irritating tissue
- Enhanced tactile touch lets you know when you've located the suture.
- Ball-point tips softly move tissue aside



*Laschal is a Registered Trademark of Laschal Surgical

Check-Film II®

Articulating Film

The PlanB Check-Film offering provides the Clinician an ideal choice in Pre-Cut Articulating Film.

Only 21 microns thick, universal in application, stretchable, and yet tear resistant, available in 1 or 2 sided, and packaged in convenient 280 strip tubs.

PlanB Check-Film II comes in:

- Red/Black
- Red/Red
- Black/Black
- Red only (1 sided)



The EndoCowboy is an endodontic instrument that allows dentists to grasp, loosen, and remove fractured files deep in the root canal. Due to the immense tensile strength of the specially designed lasso wire, the EndoCowboy not only serves as a pure gripping instrument but can also remove stuck files with considerable leverage. As a result, the EndoCowboy can be used earlier in the treatment process, saving precious time.

Kit Includes:

- EndoCowboy autoclavable device
- Hard Case
- (3) Yellow Lasso Tips: 0.12 mm wire
- (3) Blue Lasso Tips: 0.1 mm wire

Green Lasso Tips: 0.08 are available as a refill



Focus on the File

We have placed the adjustment wheel used to tighten the lasso at the rear end of the EndoCowboy®. This allows the assistant to take over the job of tightening the lasso. As a result, the dentist can concentrate fully on the placement of the lasso and the removal of the file. This also avoids any shaking when tightening the lasso.



Irrigation Accessories from Vista Dental

Stropko™ Irrigator

The Stropko™ Irrigator – an instrument used for precise control of air and/or water in any dental procedure (crown, bridge, restorative, endodontic, periodontic, surgical, implant, etc.) that requires irrigation or drying during the process. The Stropko™ Irrigator is especially useful when performing procedures with the Surgical Operating Microscope when precision & control of the irrigation is essential. Use in every dental procedure to assure a gentle and effective stream of water and/or air for superior and efficient cleaning or drying of any surface or working area.



20g 22g 25g Blue-Flo™
4 Tips included with Stropko



2" Original Length



3.5" XL Length



18g All tips available in pack of 20 as well as the 18g

*Stropko is a Trademark of Vista Dental Products

MST Visco-Tip™



MST: Material Saving Technology

Conventional tips trap a significant amount of unusable material inside of the hub. MST minimizes the internal volume of the tip by up to 87%



Conventional tip



MST Visco-Tip™



Bendable, flexible 25g tip improves flow and placement of viscous materials.

Designed for Bioceramics and Calcium Hydroxide.

Available in 50 pack refills

*MST Visco-Tip is a Trademark of Vista Dental Products

PlanB Dental comes to Market

PlanB Dental was formed in 2022. We feel our name speaks to those who are interested in improving patient care through technique improvements, technology breakthroughs, and welcome a willingness to self-evaluate, to embrace continuous improvement—to consider a PlanB. The world was just coming out of Covid at the time, and it was clear the status quo required disruption.

Designed by Endodontists for Endodontists

Each of our products benefit from a global panel of everyday practicing clinicians, university based researchers, and CE leaders for input and direction. After all, the best dental products are not conceived in the lab, they are created at the chair. Our goal is to develop products that blend clinical efficacy, economic benefits, and patient friendliness.

Focused on Treatment Outcomes

PlanB Dental stands committed to the preservation of tooth structure during RCT because minimizing loss of structural integrity is the best way to ensure endodontically-treated teeth outlive their owners. As such, PlanB Dentals' miniKUT files are designed to cut small preparations with speed, strength, and consistency. We often hear from our users that miniKUT files are remarkably resistant to fracture, incredibly flexible, and exceedingly sharp. As a bonus, our matching gutta percha offers an ideal level of stiffness and high bond strength to Bioceramic sealers. It is a very complete system.

Hopefully this catalog has given you a good overview of our offering.

We appreciate your consideration.

PlanB Dental
315 Bollay Drive, Suite 150
Goleta, CA 93117

800.528.1590

www.PlanBDental.com

