

**miniKUT**  
MINIMALLY INVASIVE FILE SYSTEM

**Designed by Endodontists  
for Endodontists**

# miniKUT<sup>®</sup>

MINIMALLY INVASIVE FILE SYSTEM



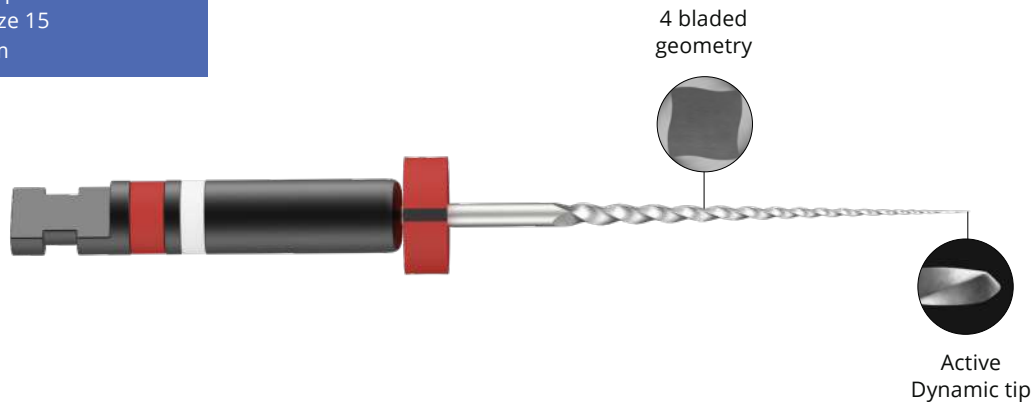
“As we think about preserving natural dentin to help ensure a lifelong restoration, the name miniKUT became so appropriate. The goal is to empower the clinician and not limit you. I hope you find the miniKUT Rotary NiTi System as beneficial to your patients as I do...”

– Dr. L. Stephen Buchanan



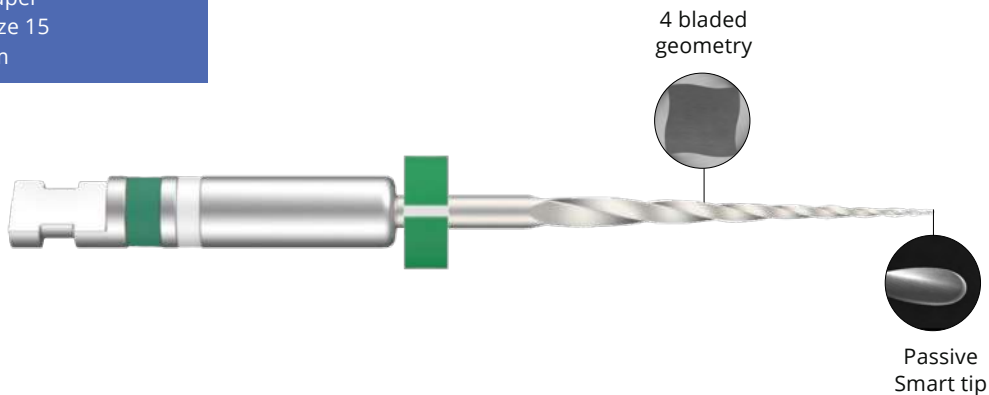
## miniKUT MB2 File - “The BlackJack™”

.05 Taper  
Tip size 15  
17mm



## miniKUT Orifice Shaping File

.07 Taper  
Tip size 15  
17mm



# miniKUT EZP™ Negotiating Files

**.03 Taper and .05 Taper**  
Tip size 15  
21, 25, and 31mm

Maximum flute diameter  
.03 Taper - .8mm  
.05 Taper - 1.0mm

4 Bladed geometry

Passive Smart tip

4 Bladed geometry

Active Dynamic tip

# miniKUT Shaping Files

**.03 Taper and .05 Taper**  
Tip sizes 20-45  
21, 25, and 31mm

2 Bladed geometry

Passive Smart tip

2 bladed geometry

Passive Smart tip

# miniKUT Retreatment File

**.06 Taper and .08 Taper**  
Tip sizes 20 (06), 25 (08)  
21 and 25mm

3 Bladed geometry

Passive Smart tip

3 Bladed geometry

Passive Smart tip

**Calibration Legend**  
21mm: 18, 19, 20mm  
25mm: 18, 19, 20, 22, 24mm  
31mm: 24, 25, 26, 28, 30mm

**Maximum Flute Diameter**  
.03 Taper: .80mm  
.05 Taper: 1.0mm

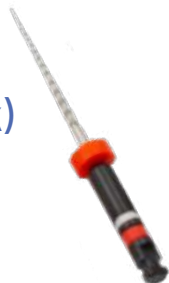
## miniKUT Procedure Packs

3 Files	
Small Canals	15/.07, 15/.03, 25/.03 (17mm & 25mm)
Large Canals	15/.07, 25/.05, 35/.05 (17mm & 25mm)



## miniKUT MB2 Files (The BlackJack)

6 Pack
.15/.05, 17mm



## miniKUT Rotary Negotiation Sampler Pack

4 Files
.15/.07, .15/.05 (mb2), .15/.03, .15/.05 (17mm & 25mm)



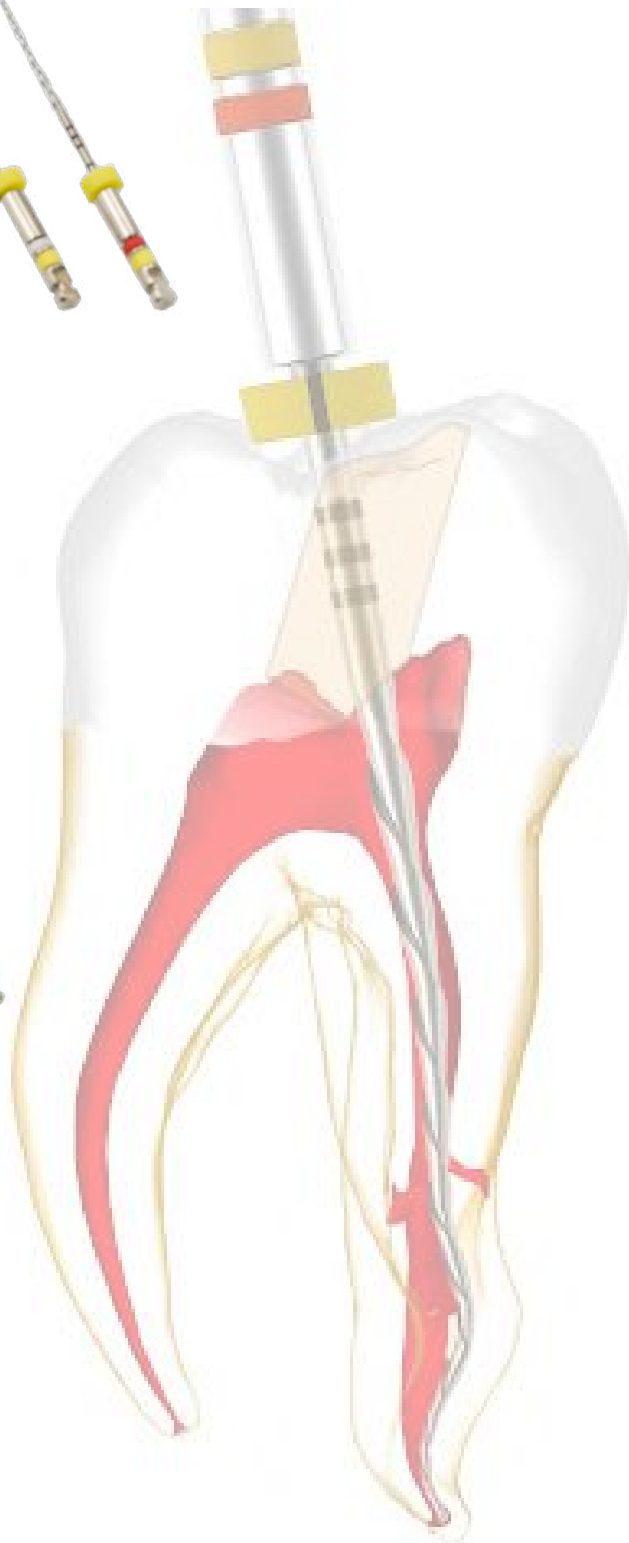
## miniKUT Orifice Shaping Files

6 Pack
.15/.07, 17mm



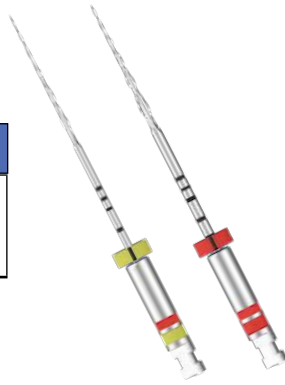
## miniKUT EZP Negotiating Files

6 Pack
.15/.03, 15/.05. (21mm, 25mm, & 31mm)



## miniKUT Shaping Files

<b>6 Pack</b>
Sizes .20 - .45 Tapers .03 & .05 21mm, 25mm, & 31mm



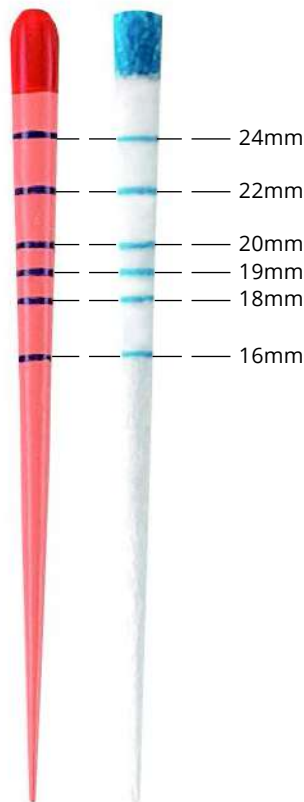
## miniKUT Retreatment Files

<b>3 Pack</b>
Sizes .20/.06 (21mm & 25mm) .25/.08 (21mm & 25mm)



## miniKUT Gutta Percha Points

<b>60 Points per Pack</b>
Sizes: .15 - .45 Tapers: .03 & .05 Assorted Packs: .15 - .40 (.03 & .05 Taper)



## miniKUT Paper Points

<b>100 Points per Pack</b>
Sizes: .15 - .45 Tapers: .03 & .05 Assorted Packs: .15 - .40 (.03 & .05 Taper)



## miniKUT EZP



This case by Christophe Verbanck illustrates how the combination of flexibility and core strength of miniKUT EZP 15/03 benefits deep multi-dimensional curves.



*"The miniKUT feature I appreciate most is the fully radiused "Duckbill" tip. It not only negates any potential for ledging but also eliminates the use of hand files."*

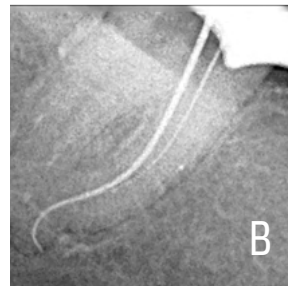
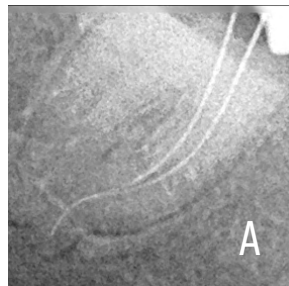
- **Dr. Christophe Verbanck**  
Endodontist



## miniKUT EZP



This case by Marc Kaloustian demonstrates using the miniKUT EZP 15/03 as "First File to Length". Image A features no patency with a 10K File. Image B shows patency with a miniKUT 15/03 run at 800rpm.



*"I like the great ability of miniKUT files to shape quickly, safely, in a conservative way, narrow long canals with the perfect respect of the original anatomy."*

- **Dr. Marc Kaloustian**  
Endodontist



## miniKUT EZP



This case by Bobby Nadeau was finished to a miniKUT 15/03 in all canals highlighting the potential for deep minimal shaping in curved canals.

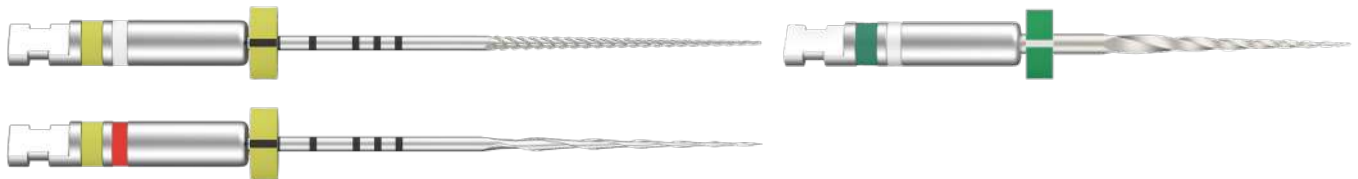


*"The MiniKUT 15.03 file is extremely flexible, efficient and safe, even in the most challenging canals. The matching 15.03 gutta percha points also fit the preparation perfectly."*

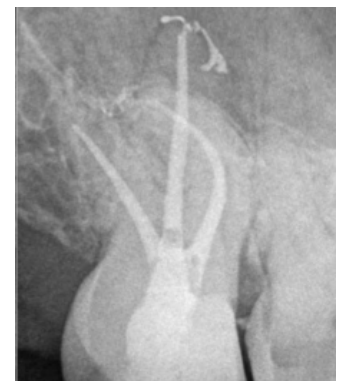
- Dr. Bobby Nadeau  
Endodontist



## miniKUT Small Canals Procedure Pack



This case by Rafael Marte Fiallo demonstrates how the miniKUT Small Canals Procedure Pack provides an ideal 3 file set-up. Shape the orifice with the OS file at 1000 rpm, and get to length with EZP 15/03. Finish with the miniKUT 25/03.

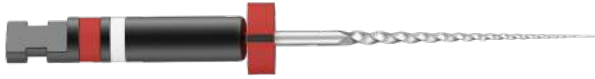


*"I'm very impressed with the way miniKUT files behave in my hands. They are fast, secure, and well balanced. it is a game changing file system."*

- Dr. Rafael Marte Fiallo  
Endodontist



## miniKUT MB2 - “The BlackJack™”



This case by Roger Warren demonstrates how the 17mm BlackJack™ with its Dynamic tip is the ideal instrument to capture the orifice and coronal shaping of a calcified MB2.



*“The BlackJack™ has become my go-to for accessing MB2s. The subtly angled Dynamic Tip provides just enough cutting to find these often calcified canals.”*

- **Dr. Roger Warren**  
Endodontist



## miniKUT MB2 - “The BlackJack™”



In this case by Milena Perraro Martins featured the miniKUT MB2 15/05 in all canals demonstrating the minimal coronal shaping.



*“miniKUT files are safe to use in canals with extreme curvature, and the miniKUT MB2 file can be used in all canals as an orifice shaper.”*

- **Dra Milena Perraro Martins**  
Endodontist





## miniKUT Shaping Files



This case by JT Crepps highlights how the precise cutting of the miniKUT 20/03 helps preserve the natural anatomy of even delicate canals.



*"miniKUT has some of the most conservative rotary files on the market, which makes it easier to conserve tooth structure. Their gutta percha fits very well, which is not the case for other conservative files on the market."*

- Dr. JT Crepps  
Endodontist



## miniKUT Retreatment Files



This case by Brett Gilbert featured the miniKUT .06 Retreatment file with its 3-bladed cross section which provides the right balance of strength and room for GP removal running at 1,000 rpm. Notice how the canal shape was minimally maintained.



*"I perform non-surgical retreatment cases in my practice everyday. For years I have been looking for a minimally invasive file that was strong and flexible enough to engage and remove gutta percha without overshaping the canals. I am grateful to have found the MiniKUT Retreatment File for this purpose. These files help me get the job done efficiently and conservatively."*

- Dr. Brett Gilbert  
Endodontist





The Original  
**TFRK™**  
 THE FILE RETRIEVAL KIT

**The first system-based approach to separated file removal.**

Since 2016, TFRK has been the NUMBER 1 File Retrieval System in the world with thousands of successful procedures.

All components are presented in an elegantly designed autoclavable cassette.

The Instructions for Use offer a clear step-by-step process designed by Dr. L. Stephen Buchanan.

TFRK™ is a trademark of Dental Engineering Laboratories



## TFRK (THE File Retrieval Kit)

### Satelec and EMS versions

**Kit Components (all available as refills) with either Satelec\* or EMS\* compatibility:**

- 1 - Micro-Explorer Hand Instrument (TFRK-ME)
- 1 - Gutta-Percha Removal Hand Instrument (TFRK-GPR)
- 1 - Modified #3 Gates Glidden Bur (GG-3M)
- 1 - Micro-Trephine bur (TFRK-MT)
- 1 - Ultrasonic Tip Straight (TFRK-S)
- 1 - Ultrasonic Tip 6 o'clock (TFRK-6)
- 2 - Ultrasonic Tip 12 o'clock (TFRK-12)
- 2 - TFRK Loop+
- 1 - Autoclavable Cassette

### Ultrasonic Connection Options:

Satelec, Acteon, Vista P5, NSK, Sybron Endo, Kerr, Obtura Spartan, Adec, J. Morita, Dentsply/Tulsa, Hu-Friedy (S Series), EIE2



## TFRK Loop+

### Part Number: 7120416

The TFRK Loop+ is a micro-lasso comprised of a tiny wire loop at the end of a stainless-steel cannula and a blue handle with a red sliding retraction button that tightens the loop when pulled back from the tip.

The TFRK Loop+ features a tougher .005 wire over the original version which has a .003 wire. The .005 wire is 148% stronger than the .003 wire version.



## TFRK-S (Straight)

When rotation of the handpiece is limited by oral structures, the straight tip can be used to widen the inside-of-the-curve slot if needed. The output power of the TFRK-S is 0.022Watts. The main function of the TFRK-S ultrasonic tip is to give ultrasonic agitation to the separated file after space has been cut with one or both micro-spoons.



## TFRK-6 (6 o'clock) / TFRK-12 (12 o'clock)

The TFRK-6 and TFRK-12 Ultrasonic Tips are micro-spoons with cupped surfaces facing toward or away from the hand-piece, respectively. The output power of the TFRK-6 is 0.046Watts. The output power of the TFRK-12 is 0.056Watts. These instruments are used (dry) to wedge into the space on the inside of the canal curve between the separated file and the canal wall, creating a small space adjacent to the fractured file edge. After the initial use to cut a semicircular slot next to the file segment, use the TFRK-S to complete the semicircular space. The ultrasonic preparation continues until the movement of the broken instrument is confirmed under the magnification.



## TFRK-ME

The Micro-Explorer (TFRK-ME) hand instrument has extremely fine spear-shaped tips with a smooth surface for bypassing ledged canals and exploring the canal for broken files or other impediments. This instrument can be bent to meet the canal curvature so that the TFRK tips can be pre-curved the same way as it is before use. When the tip portion gets short or blunt, it can also be sharpened with the polishing point in the kit.



## TFRK-GPR

The gutta-percha removal instrument (TFRK-GPR) has arrow-shaped barbed cones on both ends to engage filling material remnants during removal procedures.



# TRUETOOTH™ & TrueJaw™

## 3D printed Replicas

Accurately named “Replicas” rather than “Models”  
Only TrueTooth and TrueJaw mimic human anatomy at the bench.

With anatomy derived from scanning thousands of teeth,  
a patented radio-opacity 3D ink, and the ability to suture;  
the real benefits of iterative training can be realized.

PlanB has the industry’s most expansive portfolio  
of training replicas with our 150 unique variations.

Check out our website [www.planbdental.com](http://www.planbdental.com) for our  
complete offering or to download a comprehensive  
digital catalog.

Take it from world-renowned clinician and educator Dr. Gilberto Debelian:



*“TrueJaws are exceptional teaching models used at our Endo Inn courses. The bone and tooth structures are excellent replicas which helps the participants and teachers to learn and teach the minimal invasive techniques of endodontic microsurgery.”*

## TrueJaw Endo Surgery

Endo Surgery Replicas have authentic periradicular lesions associated with five teeth in both maxillary and mandibular jaws; three lesions perforate, and two lesions lie hidden behind the buccal cortex.

TrueJaw Endo Surgery is available as an Upper and Lower set or each arch individually.

TrueJaw is also available in formats for Implant and Extraction Training.



## TrueTooth-The Classics

This is the quintessential **4-canal Maxillary Molar**. Pulp chamber has moderate calcification, MB2 canal has apical terminus separate from the MB1, each communicating twice through mid-root isthmuses and ultimately bifurcating in the last 1-2mm's. Palatal canal has a large .39mm apical diameter with buccal kick.

Classic **4-canal Mandibular First Molar**. Large pulp chamber is ideal for practicing access procedures. Coronal half of these four canals are large and uncomplicated. At the mid-root in the distal, the large ovoid canal bifurcates into DB and DL canals with smooth distal curvature with lateral irregularity.



## Instructor's Choice

Maxillary Central Incisor with mid-root lateral canal and large apical accessory canal. Possesses a moderate challenge during the access procedure as part of the pulp chamber is calcified, receding to the CEJ. Apical accessory canal provides procedural challenge that clinicians often encounter.

Mandibular Premolar with single root and single canal with 3 flutings that suggest the possibility of extra canals (no extra canals). Medium-sized pulp chamber is easily found during access. The canal is small and has multi-planer curvature. Requires file bending and effective direction of the bent file tip to reach terminus.



# More from PlanB

## PlanB Endodontic Cordless Motor

The PlanB Motor features full functionality, miniKUT presets, a super small head, wireless charging, excellent ergonomics and a built in Apex Locator. Auto start and stop functions offer an extra level of convenience. It has a top speed of 2,500 RPM!

### An overview of features:

- Wireless handpiece
- Built-in apex locator
- Adjustable reciprocating angle - (10°interval; adjustment range: 20°- 340°)
- 360° rotatable 6:1 contra-angle
- Top speed of 2500 rpm
- Microscope field-of-vision friendly super small head
- Auto Start and Auto Stop functions
- miniKUT preprogrammed settings plus several competitive file systems and 10 customizable
- Rechargeable 2000mAh Lithium battery
- Inductive charging



## The long overdue update to the Access Bur space.

These are engineered to prepare an MIE access with speed and efficiency.

## MIE Access Diamonds

The PlanB Access Diamonds more than replace the LA Axxess™\* Bur, as they deliver the ideal MIE access for the miniKUT series as well as other brands.

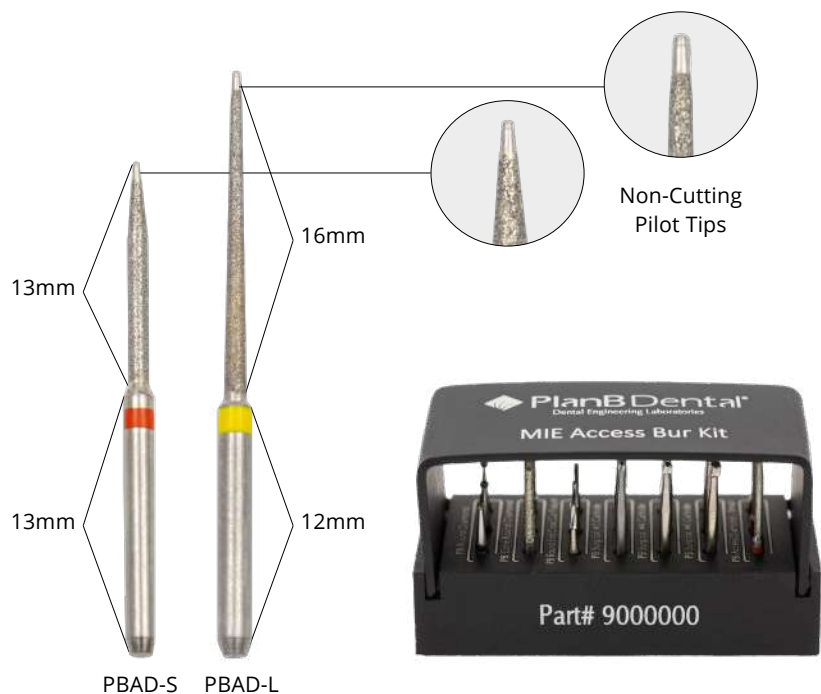
\*LA Axxess is a trademark of Kerr



## MIE Bur Kit

### The PlanB MIE Kit features 3 each of:

- Round Diamond
  - Cone Round Diamond
  - Round End Cross Cut Fissure
  - #2 Carbide
  - #4 Carbide
  - #6 Carbide
  - PBAD-S
  - PBAD-L\*
- \*Not included in kit



## Nickel Titanium Hand Files

PlanB Nickel Titanium Hand Files deliver exceptional performance. You won't find a sharper NiTi Hand Instrument. A perfect mix of flexibility, durability and sharpness.

Available in sizes .08-.60 in lengths of 21, 25 and 31 mm.



## Stainless Steel Hand Files

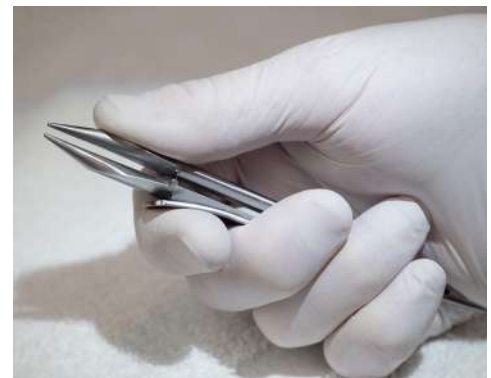
You just can't call yourself an Endo company without a dependable Stainless Steel hand file. PlanB has them.

Available in sizes .08-.60 in lengths of 21, 25 and 31 mm.



## Buchanan EndoBender2™

- Precise file bending to the first flute
- Bends SS and NiTi files (even those with shape memory)
- Bends pluggers
- Bends PS Cannulae
- Straightens pluggers
- Twin bending anvils enable bending with either hand in either direction
- Stainless steel
- Fully autoclavable
- This is a lifetime tool



PlanB Dental  
315 Bollay Drive, Suite 150  
Goleta, CA 93117

800.528.1590

[www.PlanBDental.com](http://www.PlanBDental.com)

